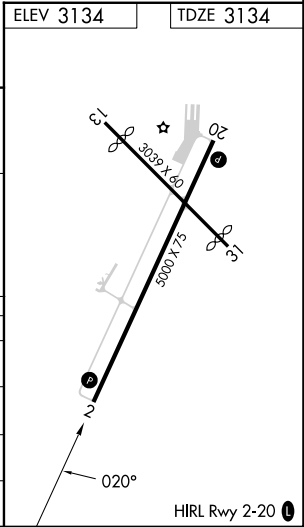
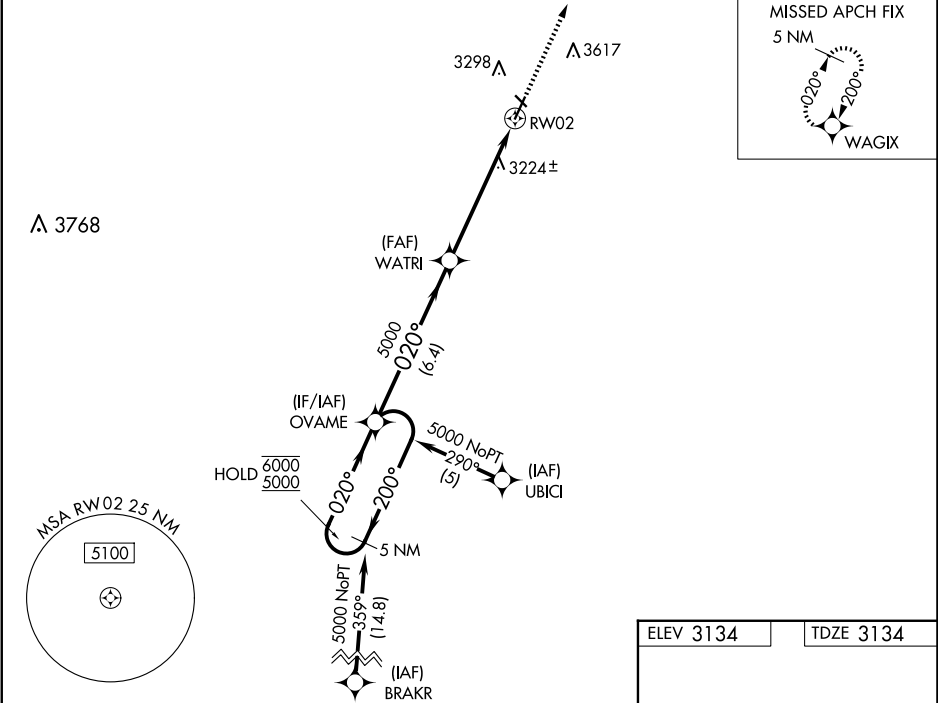


WAAS CH 63003 W02A	APP CRS 020°	Rwy Idg 5000 TDZE 3134 Apt Elev 3134
--	------------------------	---

RNAV (GPS) RWY 2

HUGOTON MUNI (HQQ)

RNP APCH-GPS.		MISSED APPROACH: Climb to 5000 direct WAGIX and hold.
⚠ Circling Rwy 13, 31 NA at night. Rwy 2 helicopter visibility reduction below ¾ SM NA. For uncompensated Baro-VNAV systems, procedure NA below -21°C or above 54°C.		
AWOS-3PT 118.6	KANSAS CITY CENTER 134.0 257.625	UNICOM 122.8 (CTAF) 0



CATEGORY	A	B	C	D
LPV DA	3384-1 250 (300-1)			NA
LNAV/VNAV DA	3425-1 291 (300-1)			NA
LNAV MDA	3600-1	466 (500-1)	3600-1⅜ 466 (500-1⅜)	NA
CIRCLING	3660-1	526 (600-1)	3980-2½ 846 (900-2½)	NA

NC-2, 07 AUG 2025 to 04 SEP 2025

NC-2, 07 AUG 2025 to 04 SEP 2025