

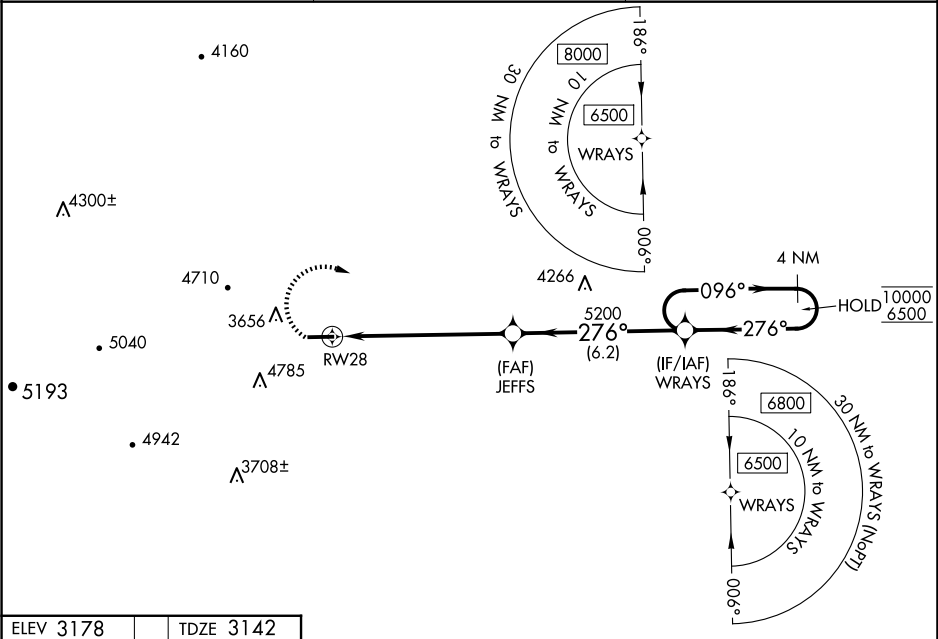
WAAS CH 70437 W28A	APP CRS 276°	Rwy Idg TDZE Apt Elev	5002 3142 3178
--	------------------------	-----------------------------	---

RNAV (GPS) RWY 28

ASHE COUNTY (GEV)

RNP APCH - GPS.	MISSED APPROACH: Climbing right turn to 6500 direct WRAYS and hold, continue climb-in-hold to 6500. *Missed approach requires minimum climb of 350 feet per NM to 5700.
<div><div><div><div></div><div></div><div></div></div><div><div></div><div></div><div></div></div><div><div></div><div></div><div></div></div></div><div><div>-16°C</div></div></div>	Circle to Rwy 10 NA at night. For uncompensated Baro-VNAV systems, LNAV/VNAV NA below 14°C or above 54°C.

AWOS-3 120.675	ATLANTA CENTER 125.15 263.0	UNICOM 122.8 (CTAF) 0
--------------------------	---------------------------------------	---------------------------------



ELEV 3178	TDZE 3142	<div><div>6500</div><div>WRAYS</div></div>			
<div><div>10</div><div>5002 X 75</div><div>28</div><div>1.8% UP</div></div>		<div><div>WRAYS</div><div>4 NM Holding Pattern</div><div>10000</div><div>6500</div><div>GP 3.00°</div><div>TCH 48</div></div>			
		<div><div>JEFFS</div><div>5200</div><div>276°</div><div>4.5 NM to RWY 28</div><div>2 NM</div><div>6.2 NM</div></div>			
		<div><div>CATEGORY</div><div>A</div><div>B</div><div>C</div><div>D</div></div>			
		<div><div>LPV</div><div>DA*</div><div>3799-178</div><div>657 (700-178)</div></div>			
		<div><div>LPV</div><div>DA</div><div>4052-4</div><div>910 (900-4)</div></div>			
		<div><div>LNAV/VNAV</div><div>DA</div><div>4024-4</div><div>882 (900-4)</div></div>			
		<div><div>LNAV</div><div>MDA</div><div>4560-11/4</div><div>1418 (1400-11/4)</div><div>4560-11/2</div><div>1418 (1400-11/2)</div><div>4560-3</div><div>1418 (1400-3)</div></div>			
		<div><div>CIRCLING</div><div>4560-11/4</div><div>1382 (1400-11/4)</div><div>4560-11/2</div><div>1382 (1400-11/2)</div><div>5140-3</div><div>1962 (2000-3)</div><div>5180-3</div><div>2002 (2100-3)</div></div>			