

APP CRS
354°

Rwy Idg
TDZE
Apt Elev

4289
2105
2121

RNAV (GPS) RWY 35

COLUMBIA (O22)

RNP APCH.

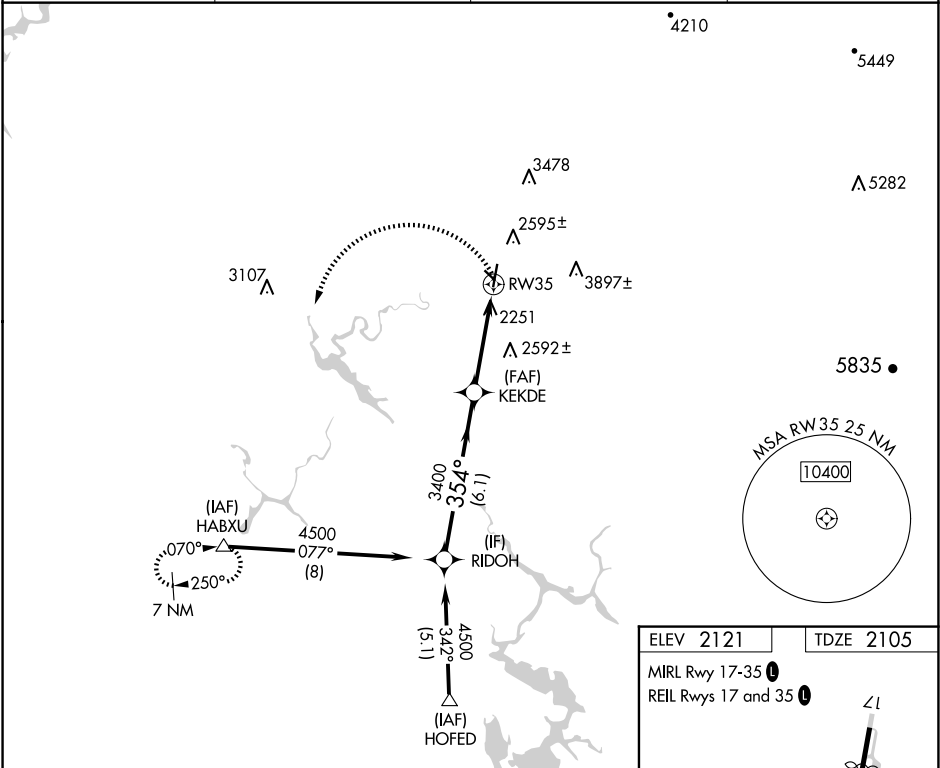
▼

▲

Circling NA to Rwy 35. Circling NA east of Rwy 17-35. Procedure NA at night. Rwy 35 helicopter visibility reduction below 1 SM NA.

MISSED APPROACH: Climbing left turn to 7000 direct HABXU and hold, continue climb-in-hold to 7000.

AWOS-3 124.65	NORCAL APP CON 125.1 363.2 (NORTH/WEST)	OAKLAND CENTER 121.25 327.0 (EAST/SOUTH)	UNICOM 122.975 (CTAF) 0
------------------	--	---	----------------------------



ELEV 2121 TDZE 2105

MIRL Rwy 17-35 0

REIL Rwy 17 and 35 0

Visual Segment - Obstacles.				
7000 HABXU				
RIDOH KEKDE RW35				
4500 354° 3400				
6.1 NM 4 NM				
CATEGORY	A	B	C	D
LNAV MDA	3140-1¼ 1035 (1100-1¼)	3140-1½ 1035 (1100-1½)	3140-3 1035 (1100-3)	NA
CIRCLING	3140-1¼ 1019 (1100-1¼)	3140-1½ 1019 (1100-1½)	3140-3 1019 (1100-3)	NA