

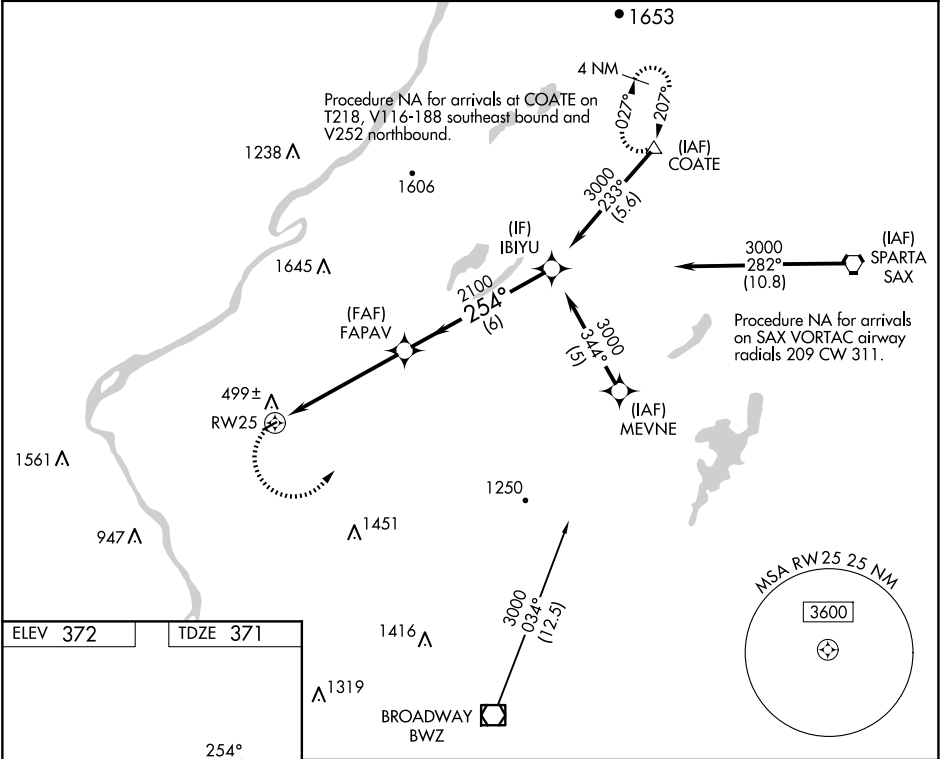
APP CRS	Rwy Idg	2877
254°	TDZE	371
	Apt Elev	372

RNAV (GPS) RWY 25

BLAIRSTOWN (1N7)

RNP APCH.		
<div><div><div>▼</div><div>▲ NA</div></div><div>Procedure NA at night. Obtain local altimeter setting on CTAF; when not received, use Lehigh Valley Intl altimeter setting. Rwy 25 helicopter visibility reduction below 1 SM NA.</div></div>		MISSED APPROACH: Climbing left turn to 3000 direct COATE and hold.

NEWARK APP CON	UNICOM
127.6 379.9	123.0 (CTAF) 0



3000

COATE

△

Visual Segment - Obstacles.

IBIYU

3000

FAPAV

2100

RW25

5.3 NM

6 NM

254°

CATEGORY	A	B	C	D
LNAV MDA	1260-1¼	889 (900-1¼)	NA	
LEHIGH VALLEY INTL ALTIMETER SETTING MINIMUMS				
LNAV MDA	1540-1¼	1540-1½	NA	
	1169 (1200-1¼)	1169 (1200-1½)		

MIRL Rwy 7-25

0