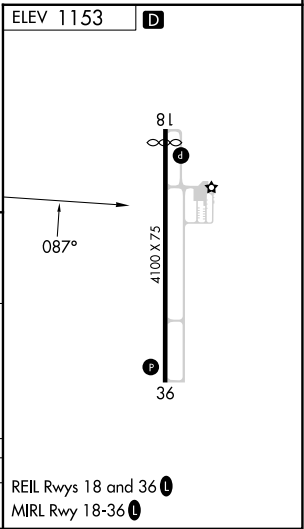
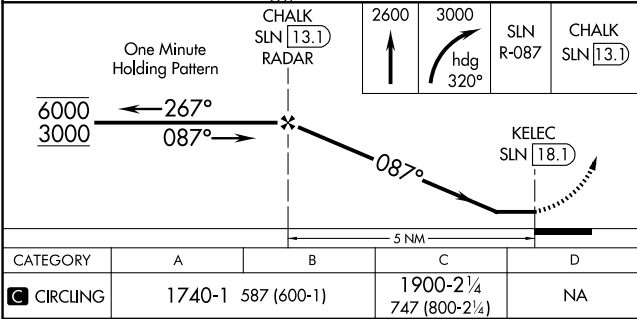
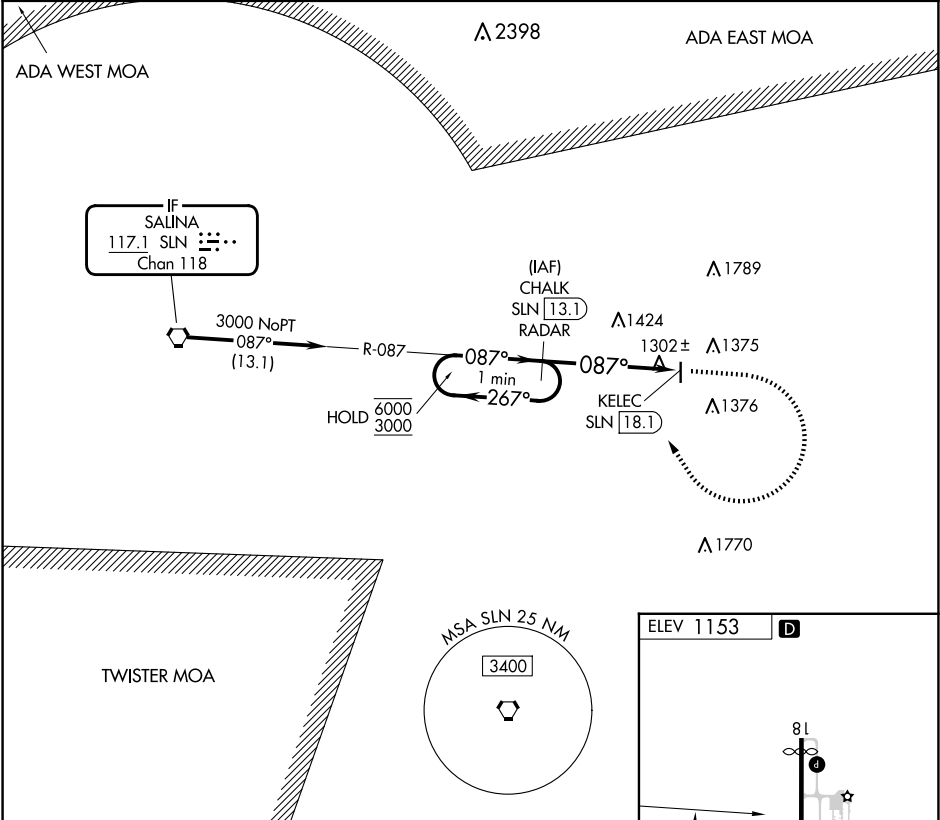


VORTAC SLN 117.1 Chan 118	APP CRS 087°	Rwy Ldg TDZE Apt Elev N/A N/A 1153
---	------------------------	--

VOR-A
ABILENE MUNI (K78)

DME required. RADAR required for procedure entry at CHALK.	MISSED APPROACH: Climb to 2600 then climbing right turn to 3000 on heading 320° and SLN VORTAC R-087 to CHALK/13.1 DME/RADAR and hold.
When local altimeter setting not received, use SLN altimeter setting and increase all MDAs 80 feet and visibility Cat C ¼ SM.	

AWOS-3P 124.125	MARSHALL AAF GCA* 121.25 269.05	UNICOM 122.8 (CTAF)
---------------------------	---	-------------------------------



NC-2, 07 AUG 2025 to 04 SEP 2025

NC-2, 07 AUG 2025 to 04 SEP 2025