

WAAS CH 97734 W36A	APP CRS 357°	Rwy Ldg 4100 TDZE 1151 Apt Elev 1153
--	------------------------	---

RNAV (GPS) RWY 36

ABILENE MUNI (K78)

RNP APCH - GPS.

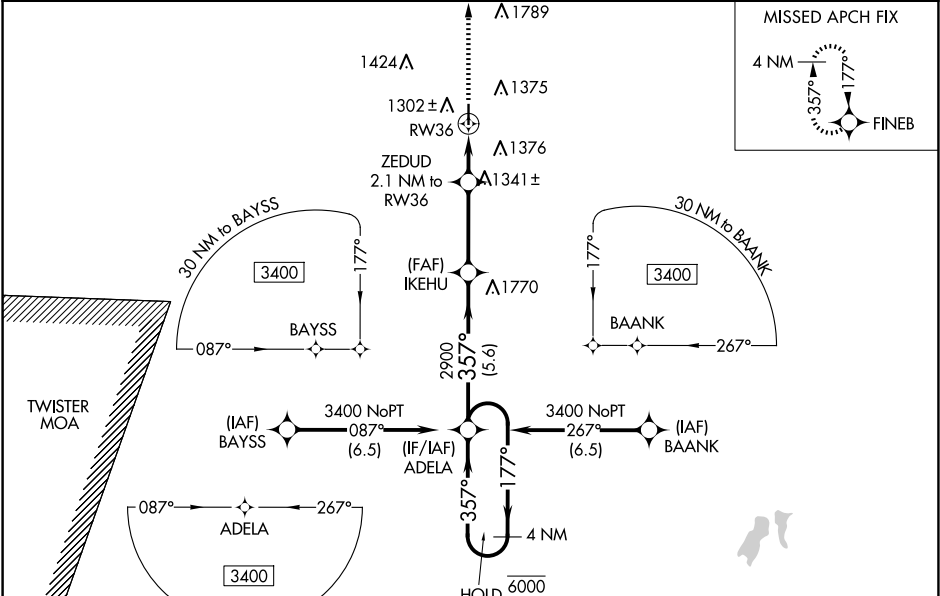
▼

NA

For uncompensated Baro-VNAV systems, procedure NA below -17°C or above 54°C.
Baro-VNAV and VDP NA when using SLN altimeter setting. When local altimeter setting not received, use SLN altimeter setting and increase LPV DA to 1468 feet; increase LNAV/VNAV DA to 1658 feet. Increase LNAV/VNAV all Cats visibility ½ SM; increase all MDAs 80 feet and LNAV visibility Cat C ¼ SM, and Circling visibility Cat C ¼ SM.

MISSED APPROACH: Climb to 3400 direct FINEB and hold.

AWOS-3P 124.125	MARSHALL AAF GCA* 121.25 269.05	UNICOM 122.8 (CTAF)
---------------------------	---	-------------------------------



ELEV 1153

TDZE 1151

REIL Rwy 18 and 36

MIRL Rwy 18-36

CATEGORY	A	B	C	D
LPV DA	1401-1 250 (300-1)			NA
LNAV/ VNAV DA	1600-1¼ 449 (500-1¼)			NA
LNAV MDA	1600-1 449 (500-1)		1600-1¼ 449 (500-1¼)	NA
CIRCLING	1680-1 527 (600-1)		1900-2¼ 747 (800-2¼)	NA

4100 X 75

81

36

357°