

WAAS CH <b>63234</b> <b>W18A</b>	APP CRS <b>177°</b>	Rwy Ldg TDZE <b>1152</b> Apt Elev <b>1153</b>
--	------------------------	---

RNAV (GPS) RWY 18

ABILENE MUNI (K78)

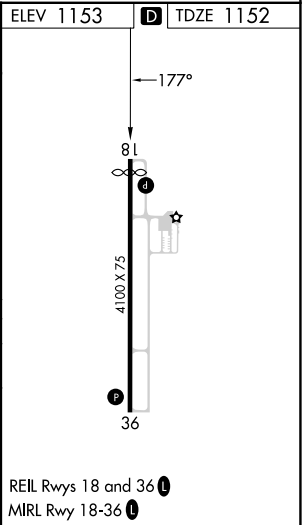
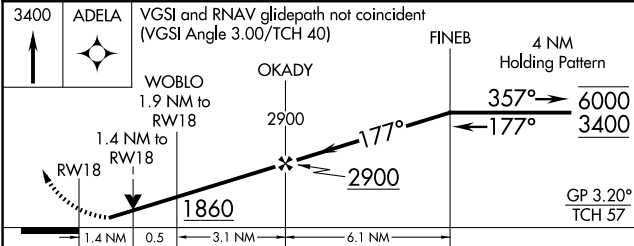
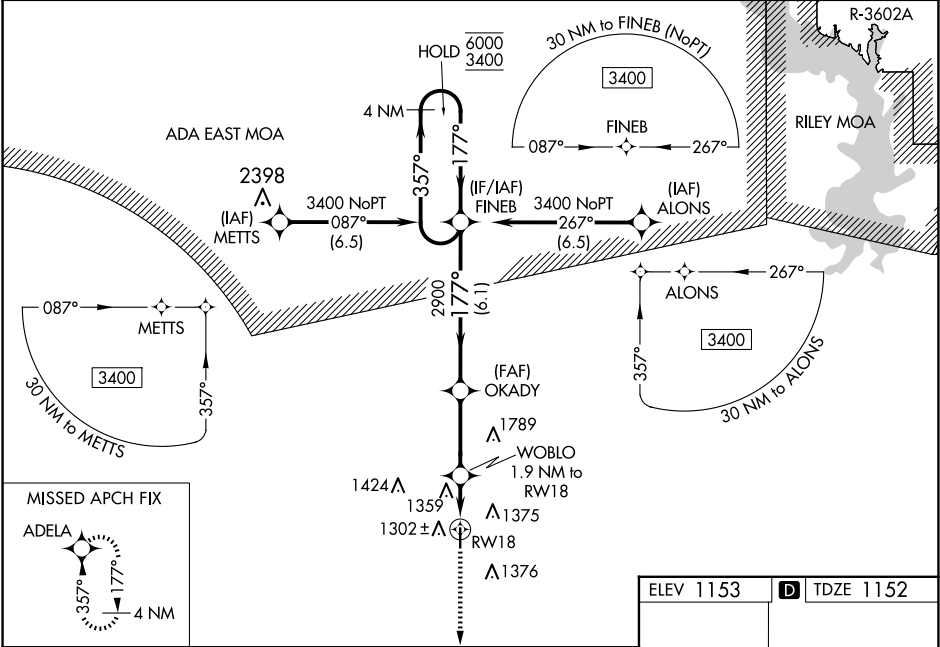
RNP APCH - GPS.

NA

Rwy 18 helicopter visibility reduction below ¾ SM NA. For uncompensated Baro-VNAV systems, LNAV/VNAV NA below -17°C or above 54°C. Baro-VNAV and VDP NA when using SLN altimeter setting. When local altimeter setting not received, use SLN altimeter setting and increase LPV DA to 1565 feet and all visibilities ⅜ SM; increase LNAV/VNAV DA to 1710 feet and all visibilities ¼ SM; increase all MDAs 80 feet and LNAV visibility Cat C ¼ SM, and Circling visibility Cat C ¼ SM.

MISSED APPROACH: Climb to 3400 direct ADELA and hold.

AWOS-3P <b>124.125</b>	MARSHALL AAF GCA* <b>121.25 269.05</b>	UNICOM <b>122.8 (CTAF)</b>
---------------------------	---	-------------------------------



CATEGORY	A	B	C	D
LPV DA	1498-1	346 (400-1)		NA
LNAV/VNAV DA	1643-1⅜	491 (500-1⅜)		NA
LNAV MDA	1660-1	508 (600-1)	1660-1⅜ 508 (600-1⅜)	NA
CIRCLING	1680-1	527 (600-1)	1900-2¼ 747 (800-2¼)	NA