

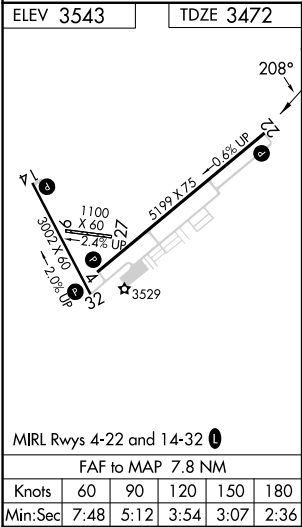
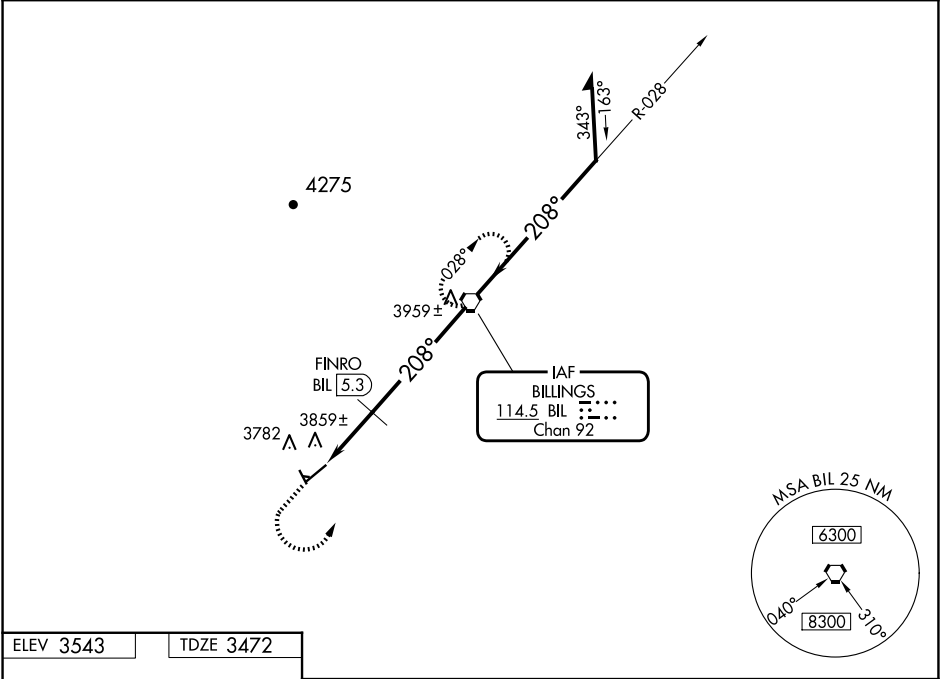
VORTAC BIL	APP CRS	Rwy Idg	5199
114.5	208°	TDZE	3472
Chan 92		Apt Elev	3543

VOR RWY 22  
LAUREL MUNI (6S8)

⚠ When local altimeter setting not received, use Billings altimeter setting: increase Circling Cats C and D MDAs 60 feet and Circling Cat C visibility ¼ SM; FINRO fix minimums: increase Circling Cats C and D MDAs 60 feet and Circling Cat C visibility ¼ SM. Rwy 22 helicopter visibility reduction below ¾ SM NA. Circling NA to Rwy 9 and 27. Circling Rwy 14, 32 NA at night.

MISSED APPROACH: Climb to 4700 then climbing left turn to 6300 direct BIL VORTAC and hold.

AWOS-2 135.05	BILLINGS APP CON 119.2 120.5 284.6	AUNICOM 123.05 (CTAF) ①
------------------	---------------------------------------	----------------------------



	4700	6300	BIL	
	↑	↪	⬡	
			FINRO BIL 5.3	
			BIL 7.8	
			3.21° TCH 40	
			2.5 NM	5.3 NM
			4360	
			6300	
			028°	
			208°	
			6300	
			Remain within 10 NM	
			VGSI and descent angles not coincident (VGSI Angle 3.00/TCH 41).	
CATEGORY	A	B	C	D
S-22	4360-1¼ 888 (900-1¼)		4360-2¾ 888 (900-2¾)	4360-3 888 (900-3)
CIRCLING	4360-1¼ 817 (900-1¼)		4460-2¾ 917 (1000-2¾)	4560-3 1017 (1100-3)
FINRO FIX MINIMUMS				
S-22	4160-1 688 (700-1)		4160-2 688 (700-2)	4160-2¼ 688 (700-2¼)
CIRCLING	4220-1 677 (700-1)		4460-2¾ 917 (1000-2¾)	4560-3 1017 (1100-3)

NW-1, 07 AUG 2025 to 04 SEP 2025

NW-1, 07 AUG 2025 to 04 SEP 2025