

WAAS CH 86822 W22A	APP CRS 216°	Rwy Idg TDZE Apt Elev	5199 3472 3543
--	------------------------	-----------------------------	---

RNAV (GPS) RWY 22

LAUREL MUNI (6S8)

RNP APCH.

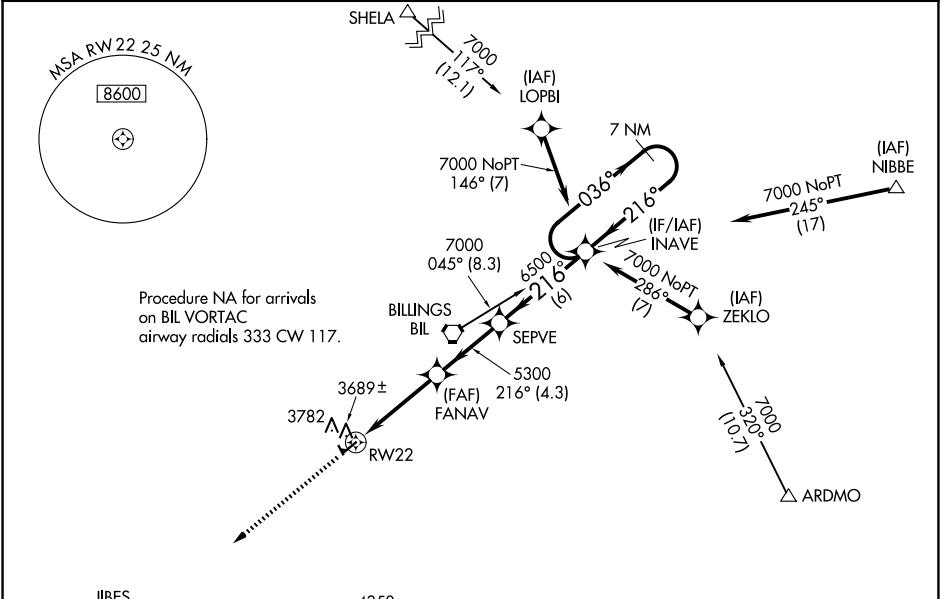
▼

▲

For uncompensated Baro-VNAV systems, LNAV/VNAV NA below -21 °C or above 53°C. When local altimeter setting not received, use Billings altimeter setting. Baro-VNAV and VDP NA when using Billings altimeter setting. Rwy 22 helicopter visibility reduction below ¾ SM NA.

MISSED APPROACH: Climb to 7000 direct JIBES and hold, continue climb-in-hold to 7000.

AWOS-2 135.05	BILLINGS APP CON 119.2 120.5 284.6	AUNICOM 123.05 (CTAF) 0
-------------------------	--	-----------------------------------



ELEV 3543

TDZE 3472

7000

JIBES

VGSI and RNAV glidepath not coincident (VGSI Angle 3.00/TCH 41).

SEPVE

INAVE

7 NM Holding Pattern

FANAV

5300

6500

216°

036°

7000

216°

GP 3.00° TCH 44

*1.6 NM to RW22

5300

6500

216°

036°

7000

216°

*LNAV only.

SEPVE

INAVE

7 NM Holding Pattern

FANAV

5300

6500

216°

036°

7000

216°

GP 3.00° TCH 44

*1.6 NM to RW22

5300

6500

216°

036°

7000

216°

CATEGORY	A	B	C	D
LPV DA	3767-1 295 (300-1)			
LNAV/VNAV DA	3965-1½ 493 (500-1½)			
LNAV MDA	4000-1 528 (500-1)	4000-1½ 528 (500-1½)		

MIRL Rwy 4-22 and 14-32 0