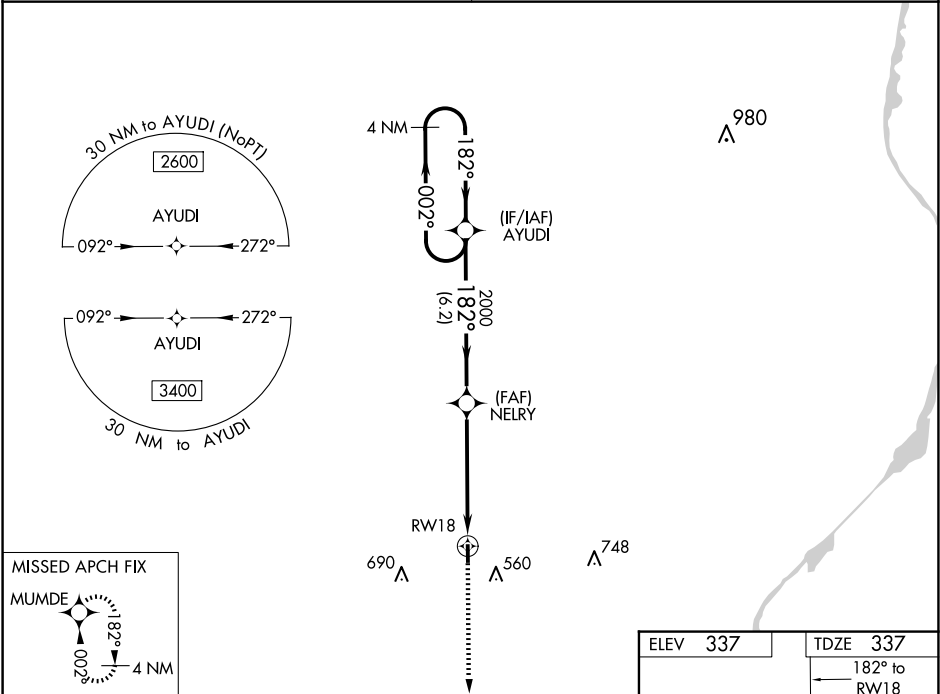


Baro-VNAV NA. DME/DME RNP-0.3 NA. Use Tupelo altimeter setting; when not received, use Columbus Air Force Base altimeter setting and increase all DA 41 feet and all MDA 60 feet, increase LPV and LNAV/VNAV all Cats visibility ½ mile, LNAV Cat C visibility ½ mile. Rwy 18 helicopter visibility reduction below ¾ SM NA.

MISSED APPROACH:
Climb to 2000 direct MUMDE and hold.

COLUMBUS APP CON ★
126.075 229.15

CTAF
122.9 0



| | | | | |
|----------------------|-----------------------|---|---------------------------|----|
| 4 NM Holding Pattern | | | | |
| AYUDI | | | | |
| 2600 ← 002° / 182° → | | | | |
| GP 3.00° TCH 40 | | | | |
| NELRY 2000 | | | | |
| RW18 | | | | |
| 6.2 NM 5.1 NM | | | | |
| CATEGORY | A | B | C | D |
| LPV DA | 624-1 287 (300-1) | | | NA |
| LNAV/VNAV DA | 669-1 332 (400-1 3/8) | | | NA |
| LNAV MDA | 820-1 483 (500-1) | | 820-1 3/8 483 (500-1 3/8) | NA |
| CIRCLING | 920-1 583 (600-1) | | 1080-2 743 (800-2 1/4) | NA |

