

WAAS CH 78034 W30A	APP CRS 304°	Rwy Idg TDZE Apt Elev	5499 247 247
--	------------------------	-----------------------------	---

RNAV (GPS) RWY 30

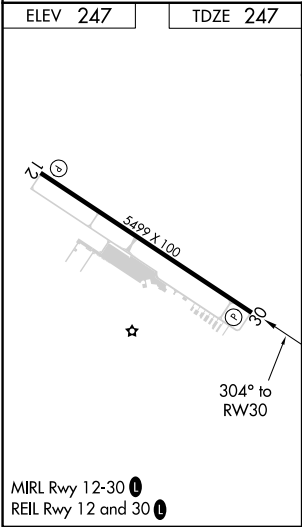
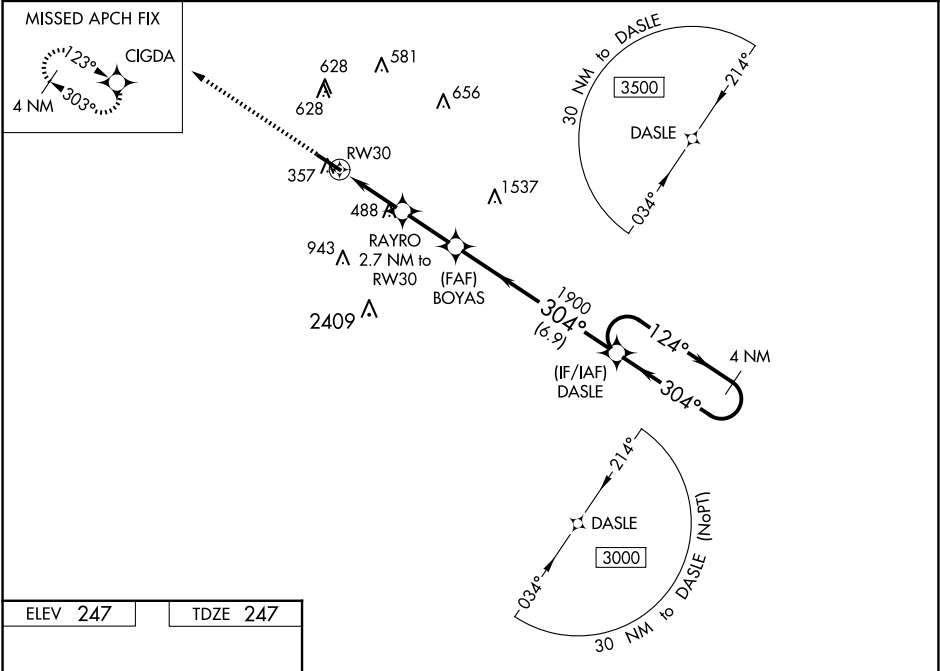
JOHN BELL WILLIAMS (J V W)

⚠

For uncompensated Baro-VNAV systems, LNAV/VNAV NA below -1.5°C (5°F) or above 54°C (130°F). DME/DME RNP-0.3 NA. Circling NA for Cat D southwest of Rwy 12-30. Helicopter visibility reduction below ¾ SM NA. When local altimeter setting not received, use Hawkins Fld altimeter setting increase all DA/MDA 40 feet, increase LPV and LNAV/VNAV all Cats visibility and LNAV Cat C/D visibility ⅓ mile, increase Circling Cat C visibility ¼ mile. Baro-VNAV and VDP NA when using Hawkins Fld altimeter setting.

MISSED APPROACH:
Climb to 2900 direct CIGDA and hold.

AWOS-3PT 118.675	JACKSON APP CON★ 125.25 319.2	UNICOM 123.0 (CTAF) 0
----------------------------	---	---------------------------------



2900 CIGDA

VGSI and RNAV glidepath not coincident (VGSI Angle 4.00/TCH 50).

*LNAV only

RAYRO 2.7 NM to RW30

BOYAS 1900

DASLE 3000

4 NM Holding Pattern

124° 304° 3000

GP 3.03° TCH 53

CATEGORY	A	B	C	D
LPV DA	513-7⁄8	266 (300-7⁄8)		
LNAV/VNAV DA	699-1½	452 (500-1½)		
LNAV MDA	740-1	493 (500-1)	740-1¾	493 (500-1¾)
CIRCLING	740-1 493 (500-1)	760-1 513 (600-1)	980-2 733 (800-2)	980-2¼ 733 (800-2¼)

SC-4, 07 AUG 2025 to 04 SEP 2025

SC-4, 07 AUG 2025 to 04 SEP 2025