

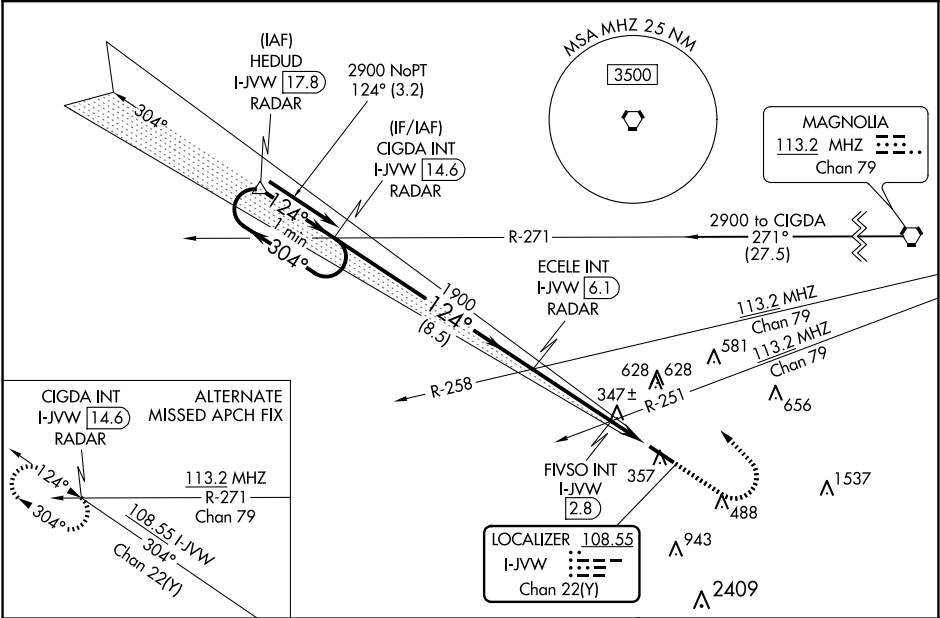
LOC/DME I-JVW	APP CRS	Rwy Idg	5499
108.55	124°	TDZE	241
Chan 22(Y)		Apt Elev	247

ILS or LOC RWY 12
JOHN BELL WILLIAMS (JVW)

⚠ VDP NA with Hawkins Fld altimeter setting. Circling NA for Cat D southwest of Rwy 12-30.
⚠ When local altimeter setting not received, use Hawkins Fld altimeter setting: increase all DA 36 feet, all MDA 40 feet, S-LOC 12 Cat C and D visibilities ¼ mile, and Circling Cat C and D visibilities ¼ mile, increase FVSO fix minimums S-LOC 12 Cat C and D visibilities ¼ mile and Circling Cat C and D visibilities ¼ mile.

MISSED APPROACH: Climb to 800 then climbing left turn to 2900 on heading 316° and on 113.2 MHz VORTAC R-271 to CIGDA INT/I-JVW 14.6 DME and hold.

AWOS-3PT 118.675	JACKSON APP CON ★ 125.25 319.2	UNICOM 123.0 (CTAF) ①
---------------------	-----------------------------------	--------------------------



One Minute Holding Pattern		CIGDA INT I-JVW 14.6 RADAR		ECELE INT I-JVW 6.1 RADAR		800 ↑		2900 hdg 316°		MHZ R-271		CIGDA INT		ELEV 247		TDZE 241	
2900 ← 304°		124° →		124°		FVISO INT I-JVW 2.8		*I-JVW 2.3		I-JVW 1.1		*LOC only		124° 5.1 NM from FAF			
GS 3.00° TCH 47																	
VGSI and ILS glidepath not coincident (VGSI Angle 3.00/TCH 38).																	
		8.5 NM		3.4		0.5		1.2									
CATEGORY	A		B		C		D										
S-ILS 12			441-3/4		200 (200-3/4)												
S-LOC 12	760-1		519 (600-1)		760-1 3/8		519 (600-1 3/8)										
CIRCLING	800-1		553 (600-1)		980-2 733 (800-2)		980-2 1/4 733 (800-2 1/4)										
FVISO FIX MINIMUMS (DUAL VOR RECEIVERS OR DME REQUIRED)																	
S-LOC 12	660-1		419 (500-1)		660-1 1/8		419 (500-1 1/8)										
CIRCLING	800-1		553 (600-1)		980-2 733 (800-2)		980-2 1/4 733 (800-2 1/4)										
MIRL Rwy 12-30 ①																	
REIL Rwy 12 and 30 ①																	
FAF to MAP 5.1 NM																	
Knots		60		90		120		150		180							
Min:Sec		5:06		3:24		2:33		2:02		1:42							

SC-4, 07 AUG 2025 to 04 SEP 2025

SC-4, 07 AUG 2025 to 04 SEP 2025