

LINCOLN, MAINE

AL-6774 (FAA)

23334

APP CRS 346°	Rwy Idg TDZE Apt Elev	2805 208 208
------------------------	-----------------------------	---

RNAV (GPS) RWY 34
LINCOLN RGNL (LRG)

RNP APCH - GPS.	
-----------------	--

NA Procedure NA at night. Rwy 34 helicopter visibility reduction below 1 SM NA. Use Millinocket altimeter setting; when not received, use Bangor Intl altimeter setting and increase all MDA 20 feet.

MISSED APPROACH:
Climb to 2800 direct
LELSE and hold.

MLT ASOS 135.225	BOSTON CENTER 124.25 290.5	UNICOM 122.8 (CTAF) 0
----------------------------	--------------------------------------	---------------------------------

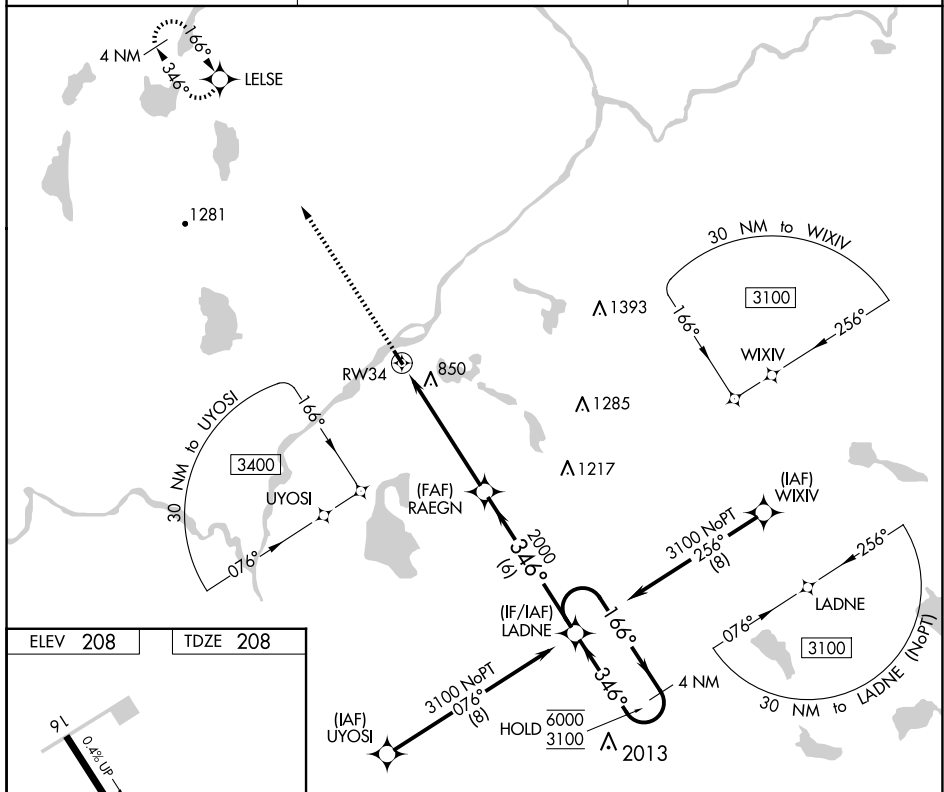


Diagram illustrating the runway layout at MIRA, showing Runway 16-34 (2805 x 60) and Runway 06W-24W (2400 x 100). Runway 16-34 is oriented 346 degrees and has a 0.4% up slope. The diagram also shows taxiway 9L and a star symbol indicating a specific location.

2800 ↑	LESE ✦	Visual Segment - Obstacles.		LADNE	4 NM Holding Pattern
		RAEGN	346°	166° → 6000 ← 346° 3100	
RW34		2000	5.5 NM	6 NM	
CATEGORY	A	B	C	D	
LNAV MDA	1180-1¼ 972 (1000-1¼)	1180-1½ 972 (1000-1½)	NA		
CIRCLING	1240-1¼ 1032 (1100-1¼)	1240-1½ 1032 (1100-1½)	NA		

LINCOLN, MAINE
Amdt 2 30NOV23

45°22'N-68°32'W

LINCOLN RGNL (LRG)
RNAV (GPS) RWY 34

NE-1, 07 AUG 2025 to 04 SEP 2025

NE-1, 07 AUG 2025 to 04 SEP 2025