

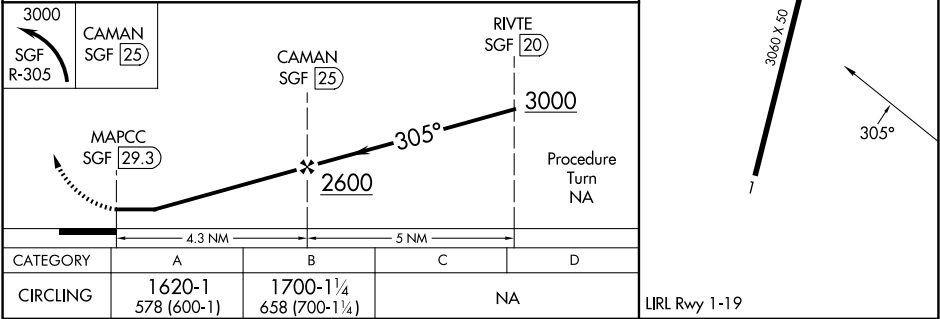
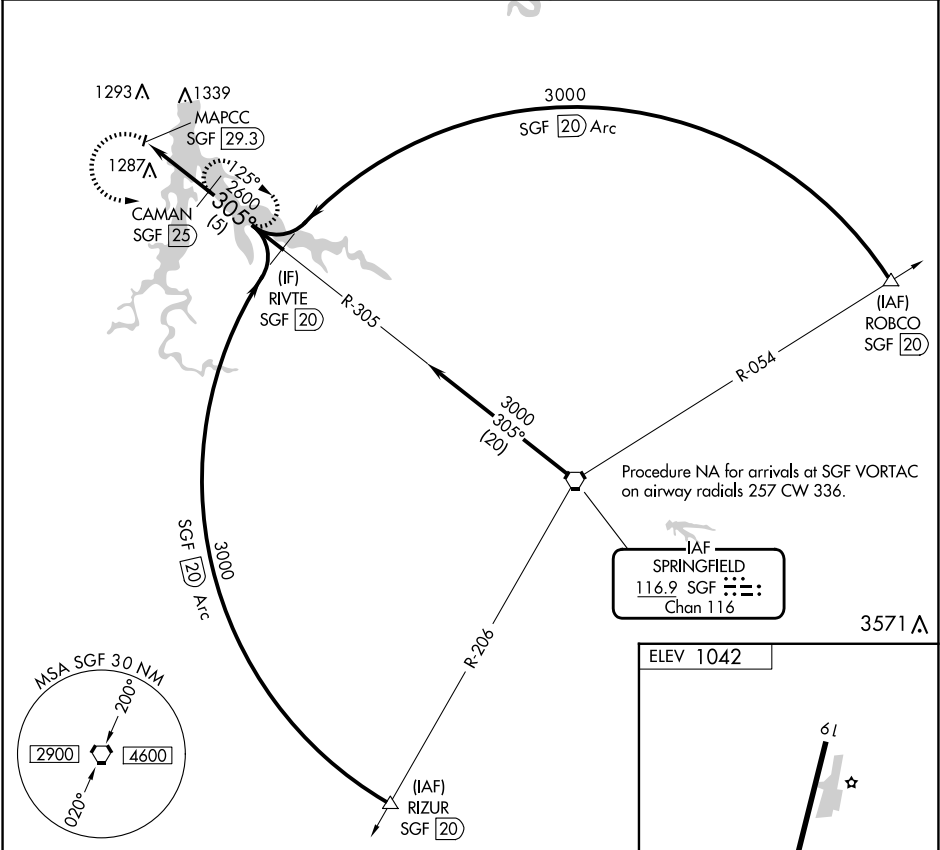
VORTAC SGF 116.9 Chan 116	APP CRS 305°	Rwy Idg TDZE Apt Elev	N/A N/A 1042	VOR/DME-A STOCKTON LAKE (MO3)
---	------------------------	-----------------------------	---	----------------------------------

NA

Use Nevada altimeter setting; when not received, use Springfield altimeter setting and increase all MDA 20 feet. Procedure NA at night. Helicopter visibility reduction below 1 SM NA.

MISSED APPROACH: Climbing left turn to 3000 on SGF VORTAC R-305 to CAMAN/25 DME and hold.

NVD AWOS-3PT 119.175	SPRINGFIELD APP CON 124.95	CTAF 122.9
--------------------------------	--------------------------------------	----------------------



STOCKTON, MISSOURI	STOCKTON LAKE (MO3)
Amcl 3B 09SEP21	VOR/DME-A
37°40'N-93°49'W	