

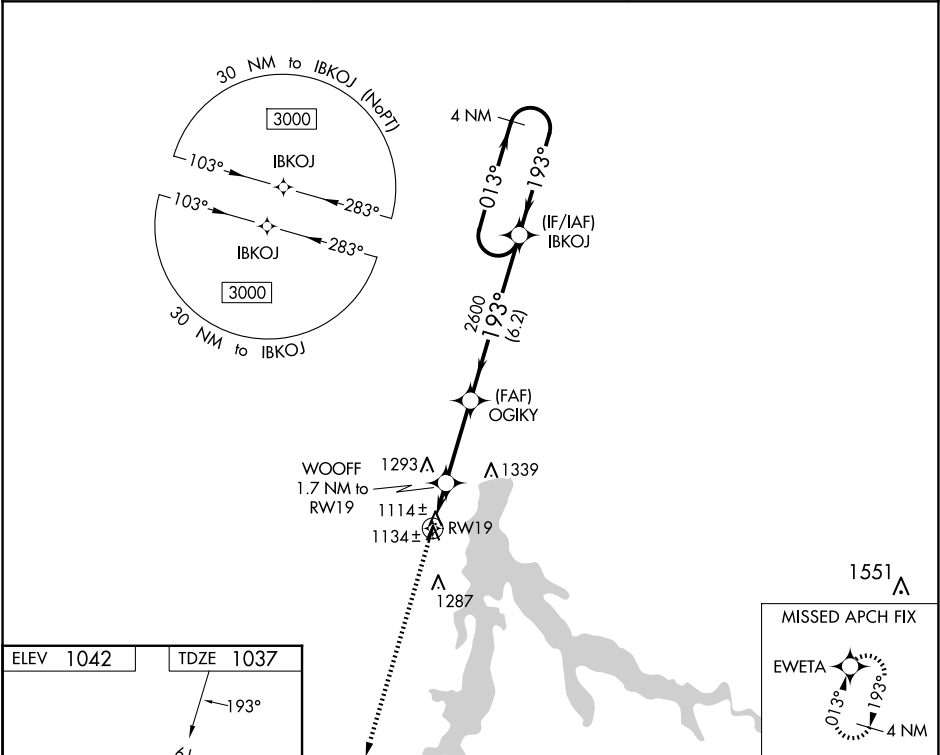
WAAS CH 50334 W19A	APP CRS 193°	Rwy Idg 3060 TDZE 1037 Apt Elev 1042
--	------------------------	---

RNAV (GPS) RWY 19

STOCKTON LAKE (MO3)

<div><div>NA</div><div>Procedure NA at night. Use Nevada altimeter setting; when not received, use Springfield altimeter setting and increase all MDA 40 feet. DME/DME RNP-0.3 NA. Helicopter visibility reduction below 1 SM NA.</div></div>	MISSED APPROACH: Climb to 3000 direct EWETA and hold.
---	---

NVD AWOS-3PT 119.175	SPRINGFIELD APP CON 124.95	CTAF 122.9
--------------------------------	--------------------------------------	----------------------



ELEV 1042	TDZE 1037
-----------	-----------

LIRL Rwy 1-19		Visual Segment - Obstacles.		IBKOJ 4 NM Holding Pattern	
3000 EWETA		OGIKY		013° → 3000	
RW19		WOOFF 1.7 NM to RW19		← 193°	
1600		2600			
1.7 NM		3.1 NM		6.2 NM	
CATEGORY	A	B	C	D	
LP MDA	1460-1	423 (500-1)	NA		
LNAV MDA	1480-1	443 (500-1)	NA		
CIRCLING	1560-1 518 (600-1)	1700-1 658 (700-1)	NA		