

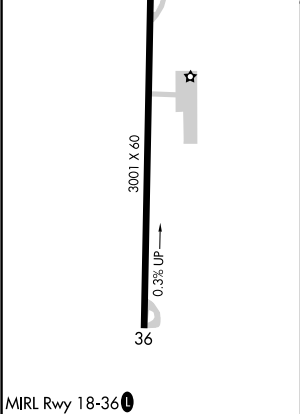
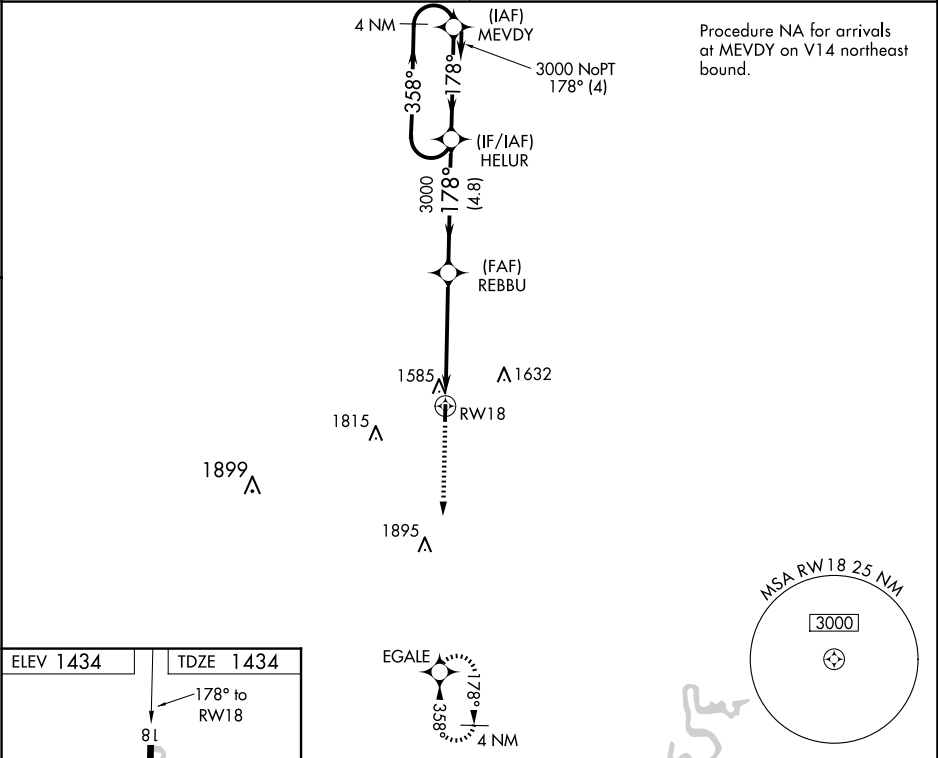
WAAS CH <b>58025</b> <b>W18A</b>	APP CRS <b>178°</b>	Rwy Idg TDZE <b>1434</b> Apt Elev <b>1434</b>	<b>3001</b>
--	------------------------	---	-------------



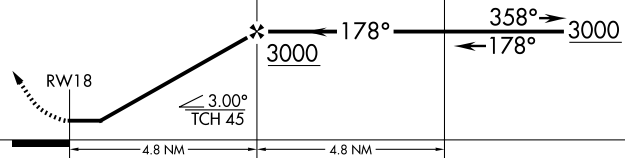
RNAV (GPS) RWY 18

JERRY SUMNERS SR AURORA MUNI (2H2)

RNP APCH.	Use Springfield altimeter setting; when not received, use Branson altimeter setting and increase all MDA 40 feet. Circling Rwy 36 NA at night. Rwy 18 helicopter visibility reduction below ¾ SM NA.	MISSED APPROACH: Climb to 3100 direct EGALE and hold.
-----------	--	---

SPRINGFIELD APP CON <b>124.95 318.2</b>	UNICOM <b>122.8</b> (CTAF) <b>0</b>
--	--



3100	EGALE	4 NM Holding Pattern			
					
					
CATEGORY	A	B	C	D	
LP MDA	1940-1	506 (600-1)	NA		
LNAV MDA	1940-1	506 (600-1)	NA		
CIRCLING	1980-1 546 (600-1)	2080-1 646 (700-1)	NA		

NC-3, 07 AUG 2025 to 04 SEP 2025

NC-3, 07 AUG 2025 to 04 SEP 2025