

APP CRS  
**357°**

Rwy Idg  
**3970**

TDZE  
**1209**

Apt Elev  
**1209**

**RNAV (GPS) RWY 35**

CLAY CENTER MUNI (CYW)

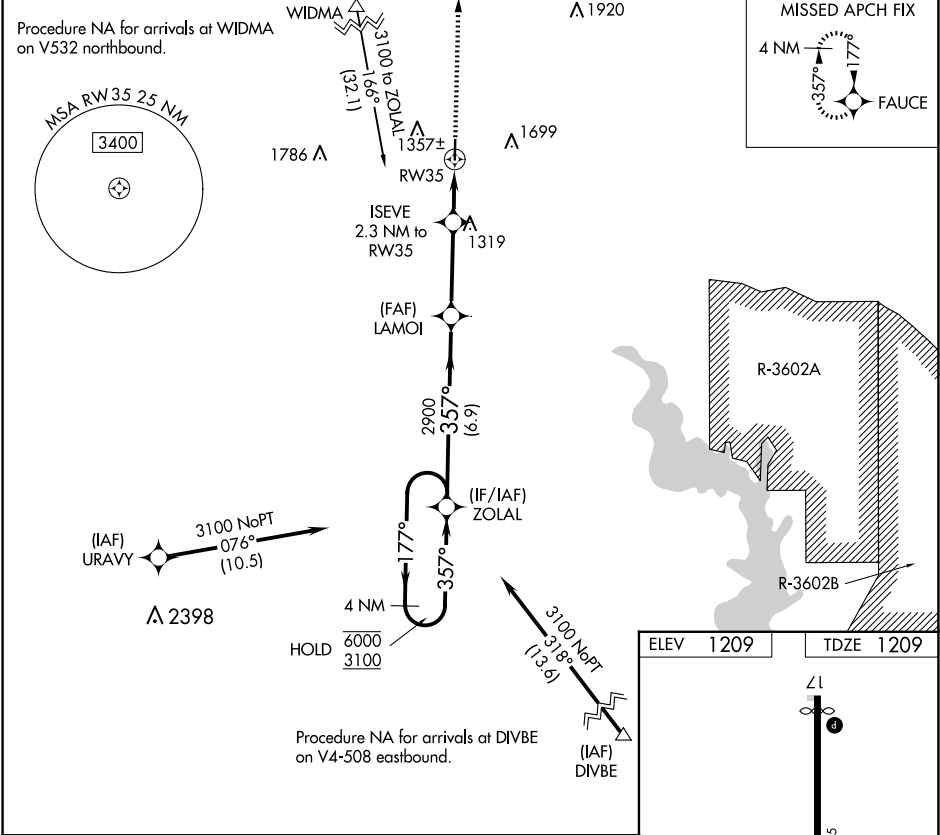
RNP APCH.

NA

Rwy 35 helicopter visibility reduction below 3/4 SM NA. VDP NA when using Salina altimeter setting. When local altimeter setting not received, use Salina altimeter setting and increase all MDA 120 feet and LNAV Cat C visibility 3/8 SM.

MISSED APPROACH: Climb to 3100 direct FAUCE and hold.

AWOS-3T <b>119.95</b>	MARSHALL AAF GCA* <b>121.25 269.05</b>	UNICOM <b>122.8 (CTAF)</b>
--------------------------	---	-------------------------------



4 NM Holding Pattern

ZOLAL

LAMOI

ISEVE 2.3 NM to RW35

FAUCE

6000 ← 177°

3100 → 357°

2900

1920

1.3 NM to RW35

RW35

6.9 NM

3.4 NM

1 NM

1.3 NM

CATEGORY	A	B	C	D
LNAV MDA	1580-1	371 (400-1)		NA

MIRL Rwy 17-35

REIL Rws 17 and 35