

WAAS CH 40326 W36A	APP CRS 358°	Rwy Idg 4335 TDZE 452 Apt Elev 452
--	------------------------	---

RNAV (GPS) RWY 36
LEXINGTON COUNTY (6J0)

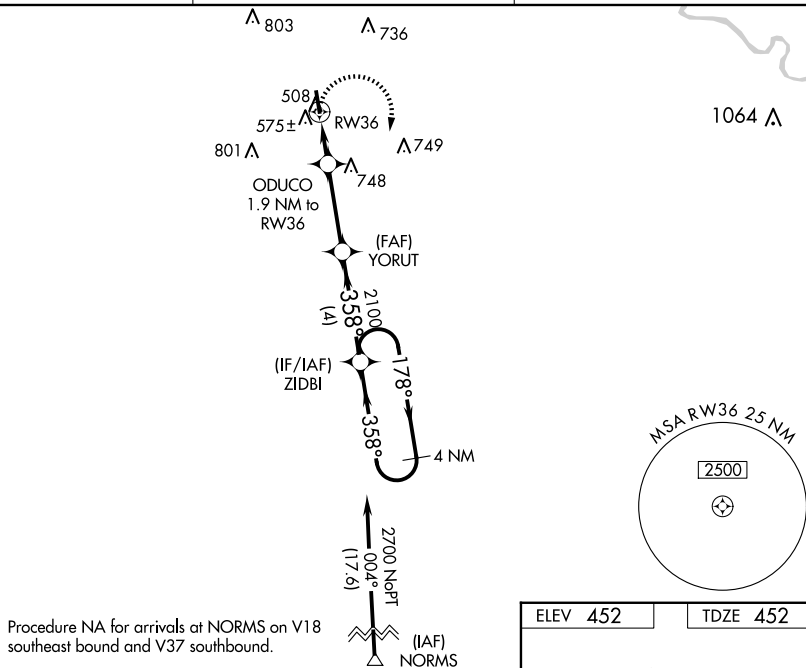
RNP APCH.

T Baro-VNAV NA. Rwy 36 helicopter visibility reduction below $\frac{3}{4}$ SM NA.
A NA Use Columbia Metro altimeter setting; when not received use Jim Hamilton L B Owens altimeter setting and increase all DA 19 feet, all MDA 20 feet and increase LPV and LNAV/VNAV all Cats visibility $\frac{1}{8}$ mile.

MISSED APPROACH: Climbing right turn to 2700 direct ZIDBI and hold.

CAE ASOS
120.15

COLUMBIA APP CON
124.15 338.2

UNICOM
123.0 (CTAF) **L**

CATEGORY	A	B	C	D
LPV DA	757-1	305 (400-1)	NA	
LNAV/ VNAV DA	793-1 $\frac{1}{8}$	341 (400-1 $\frac{1}{8}$)	NA	
LNAV MDA	880-1	428 (500-1)	NA	
CIRCLING	980-1 528 (600-1)	1060-1 608 (700-1)	NA	

