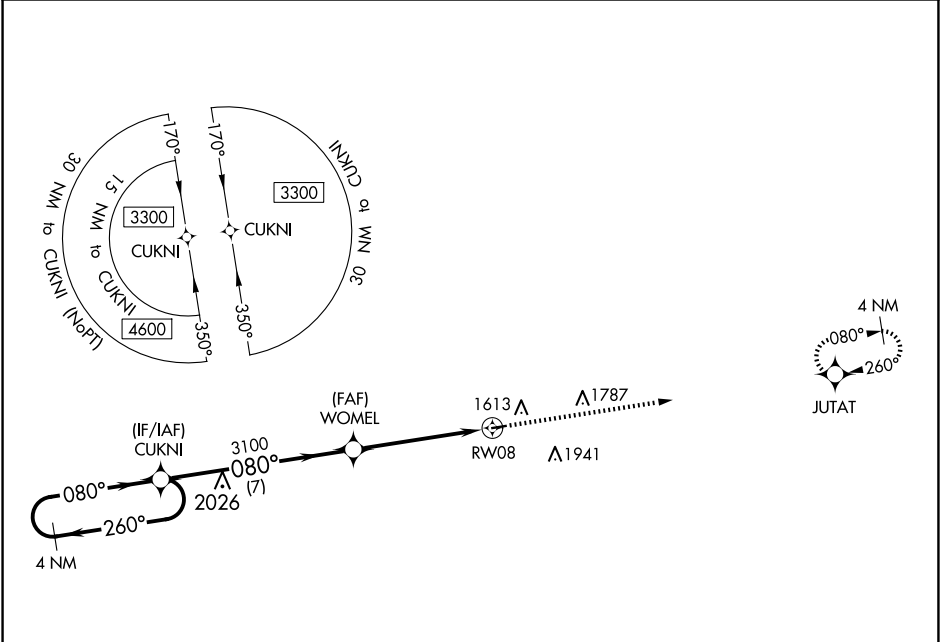


APP CRS	Rwy Idg	2922
080°	TDZE	1476
	Apt Elev	1476

RNAV (GPS) RWY 8
MOUNTAIN GROVE MEML (1MO)

<p>▼ DME/DME RNP-0.3 NA. Procedure NA at night. Use Fort Leonard Wood altimeter setting, when not received use Springfield altimeter setting and increase all MDA 20 feet. Helicopter visibility reduction below 1 SM NA.</p> <p>▲ NA</p>	<p>MISSED APPROACH: Climb to 3300 direct JUTAT and hold.</p>
---	--

<p>KANSAS CITY CENTER 128.35 284.675</p>	<p>CTAF 122.9 0</p>
--	-------------------------



				ELEV 1476	TDZE 1476
<div><div><div>4 NM Holding Pattern</div><div>3300 ← 260° 080° →</div></div><div><div>CUKNI</div><div>Visual Segment - Obstacles.</div><div>WOMEL</div><div>3100 *</div><div>RW08</div><div>7 NM</div><div>5.1 NM</div></div><div><div>3300</div><div>JUTAT</div><div>↑</div><div>✦</div></div></div> <div><div>080° to RW08</div><div>2922 X 60</div><div>0.8% UP</div><div>26</div></div>					
CATEGORY	A	B	C	D	
LNAB MDA	2140-1	664 (700-1)	NA		
CIRCLING	2140-1 664 (700-1)	2240-1 764 (800-1)	NA		
				MIRL Rwy 8-26	
				REIL Rwy 8 and 26	

NC-3, 07 AUG 2025 to 04 SEP 2025

NC-3, 07 AUG 2025 to 04 SEP 2025