

APP CRS  
322°

Rwy Idg  
TDZE  
Apt Elev

2600  
609  
609

RNAV (GPS) RWY 32

SKY HARBOR (D'Y'T)

RNP APCH - GPS.

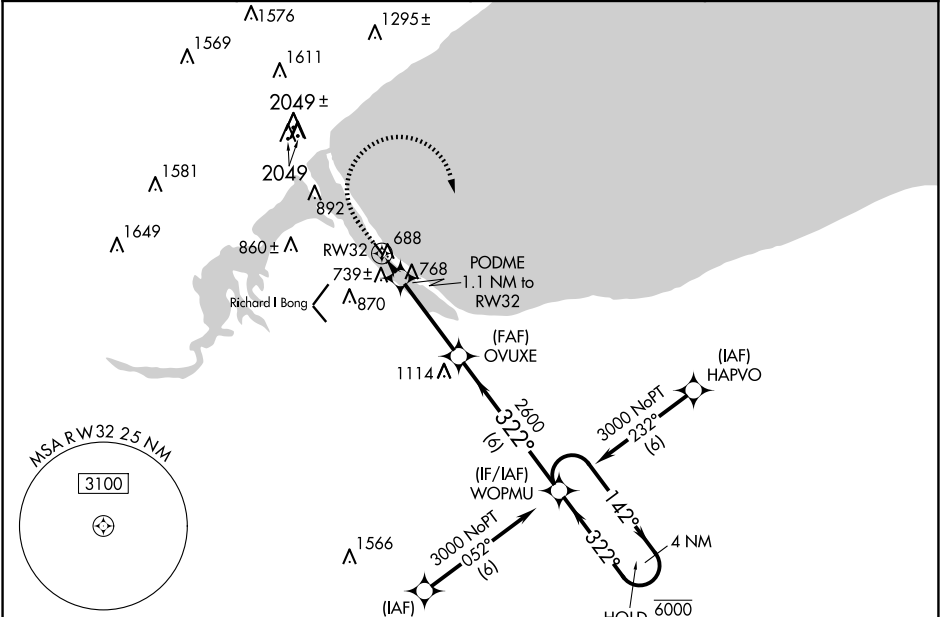
▼

▲

Rwy 32 helicopter visibility reduction below 1 SM NA.  
Circling NA to waterways 13W, 31W, 9W, 27W.

MISSED APPROACH: Climb to 1100 then climbing right turn to 3000 direct WOPMU and hold.

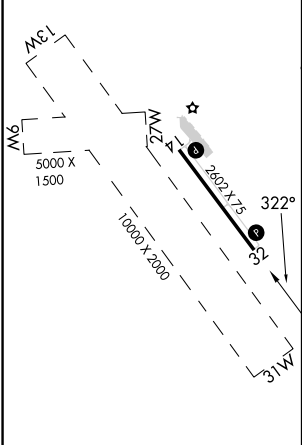
AWOS-3 119.275	DULUTH APP CON 125.45 233.7	CLNC DEL 124.8	UNICOM 122.7 (CTAF) 0
-------------------	--------------------------------	-------------------	--------------------------



ELEV 609 D TDZE 609

REIL Rwy 14 and 32 0

MIRL Rwy 14-32 0



1100	3000	WOPMU	VGSi and descent angles not coincident (VGSi Angle 4.00/TCH 20).	
↑		↻	WOPMU	4 NM Holding Pattern
1120		PODME 1.1 NM to RW32	OVUXE	142° → 6000
1.1 NM		3.5 NM	6 NM	← 322° 3000
CATEGORY	A	B	C	D
LNAV MDA	1000-1	391 (400-1)	NA	
CIRCLING	1100-1 491 (500-1)	1180-1 571 (600-1)	NA	

NC-1, 07 AUG 2025 to 04 SEP 2025

NC-1, 07 AUG 2025 to 04 SEP 2025