

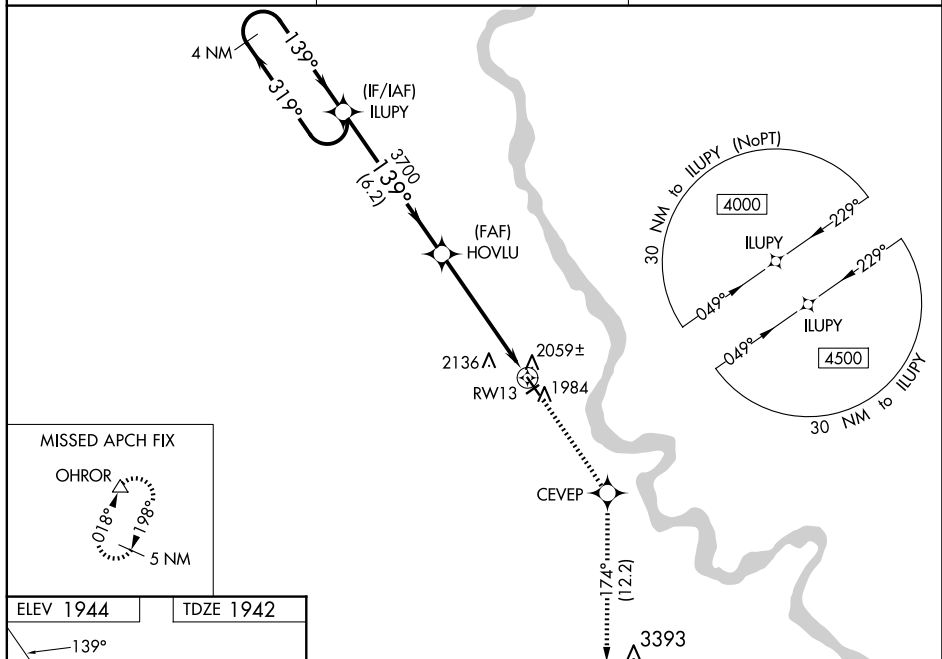
WAAS CH 49031 W13A	APP CRS 139°	Rwy Ldg 4399 TDZE 1942 Apt Elev 1944
--	------------------------	---

RNAV (GPS) RWY 13
MANDAN RGNL/LAWLER FLD (Y19)

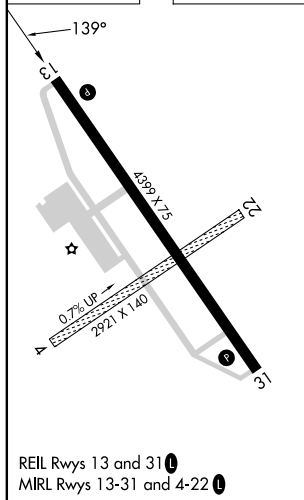
ASR Baro-VNAV NA when using Bismarck altimeter setting. For uncompensated Baro-VNAV systems, LNAV/VNAV NA below -18°C (0°F) or above 54°C (130°F). DME/DME RNP-0.3 NA. Helicopter visibility reduction below ¼ SM not authorized. VDP NA when using Bismarck altimeter setting. When local altimeter setting not received, use Bismarck altimeter setting and increase all DA 54 feet and LPV all Cat Cats visibility ¼ mile, LNAV/VNAV all Cats visibility ½ mile, increase all MDA 60 feet and LNAV Cat C/D and Circling Cat D visibility ¼ mile. Circling to Rwy 4 and 22 NA.

MISSED APPROACH:
Climb to 4700 direct
CEVEP and on track
174° to OHROR and
hold.

AWOS-3 118.225	BISMARCK APP CON★ 126.3 298.9	UNICOM 122.8 (CTAF) 0
--------------------------	---	---------------------------------



ELEV 1944		TDZE 1942
-----------	--	-----------



VGSI and RNAV glidepath not coincident
(VGSI Angle 3.00°/TCH 25).

4 NM Holding Pattern

ILUPY

HOVLU

4000

319°

139°

3700

3700

6.2 NM

4.3 NM

1.1 NM

*1.1 NM to RW13

RW13

*RNAV only.

tr 174°

OHROR

4700

CEVP

△

GP 3.00°
TCH 55

CATEGORY	A	B	C	D
LPV DA	2192-3/4 250 (300-3/4)			
RNAV/ RNAV DA	2244-1 302 (300-1)			
RNAV MDA	2320-1 378 (400-1)			
C CIRCLING	2360-1 416 (500-1)	2460-1 516 (600-1)	2460-1 1/2 516 (600-1 1/2)	2560-2 616 (700-2)