

FORT MYERS, FLORIDA

AL-6757 (FAA)

24305

VORTAC RSW 114.15 Chan 88 (Y)	APP CRS 244°	Rwy Idg 12000 TDZE 30 Apt Elev 30
---	------------------------	--

VOR or TACAN RWY 24
SOUTHWEST FLORIDA INTL (RSW)

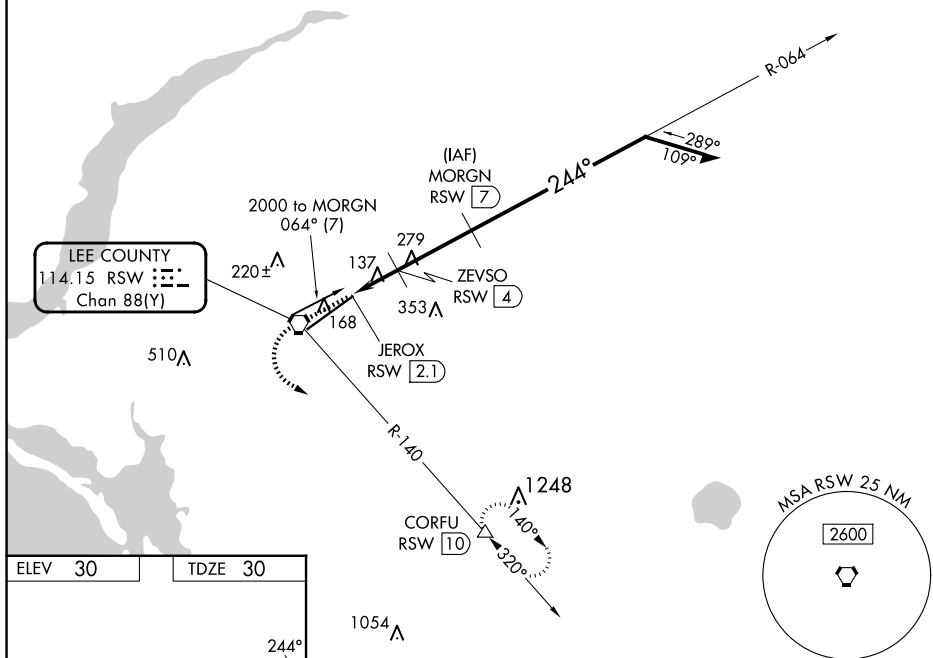
DME required.

T Rwy 24 helicopter visibility reduction below $\frac{3}{4}$ SM NA.

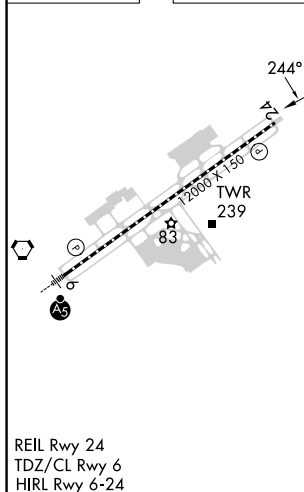
MISSED APPROACH: Climb to 1000 then climbing left turn to 2300 on RSW VORTAC R-140 to CORFU/RSW 10 DME and hold.

D-ATIS 124.65	FORT MYERS APP CON ★ 125.15 306.2 (RWY 6) 126.8 306.2 (RWY 24)	FORT MYERS TOWER ★ 128.75 (CTAF) 0 257.8	GND CON 121.9 257.8	CLNC DEL 132.075	UNICOM 122.95
-------------------------	--	---	-------------------------------	----------------------------	-------------------------

CPDLC



ELEV 30		TDZE 30
---------	--	---------



1000 ↑	2300 ↘	RSW R-140 △	CORFU VGS1 and descent angles not coincident (VGS1 Angle 3.00/TCH 72). MORG RSW 7 Remain within 10 NM			
CATEGORY	A	B	C	D		
S-24	400-1 370 (400-1)					
CIRCLING	560-1 530 (600-1)	580-1½ 550 (600-1½)	660-2 630 (700-2)			

FORT MYERS, FLORIDA
Amdt 2D 31OCT24

26°32'N-81°45'W

SOUTHWEST FLORIDA INTL (RSW)
VOR or TACAN RWY 24

SE-3, 07 AUG 2025 to 04 SEP 2025

SE-3, 07 AUG 2025 to 04 SEP 2025