

APP CRS	Rwy Idg	12000
058°	TDZE	27
	Apt Elev	30

RNAV (RNP) Z RWY 6
SOUTHWEST FLORIDA INTL (RSW)

RNP AR APCH - GPS.

For uncompensated Baro-VNAV systems, procedure NA below 4°C or above 54°C.

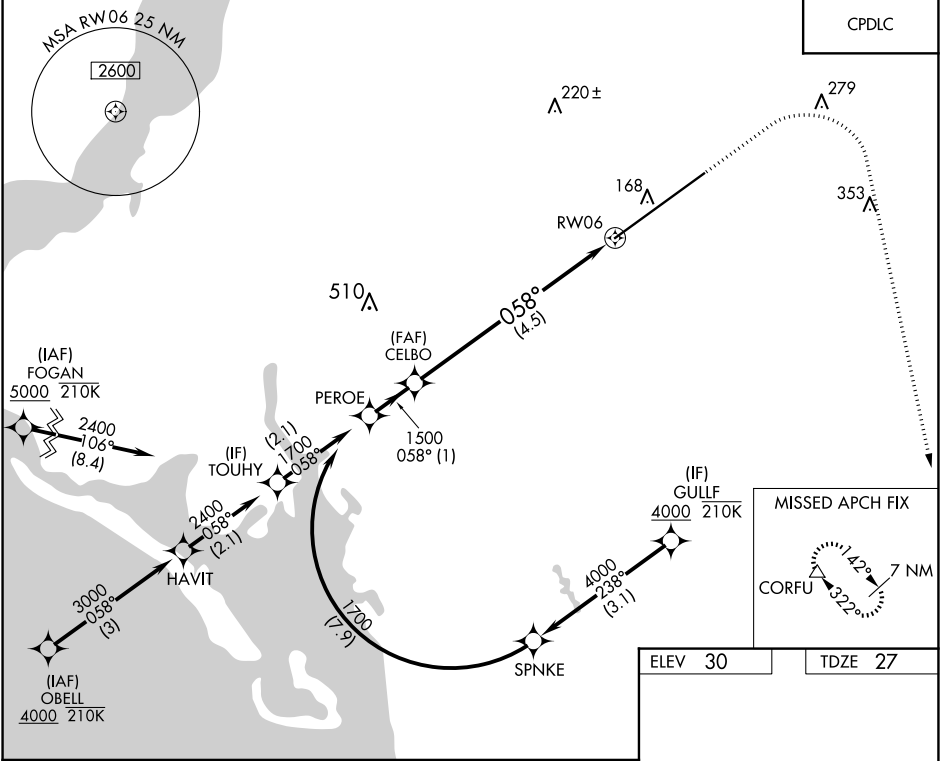
MALSR

AS

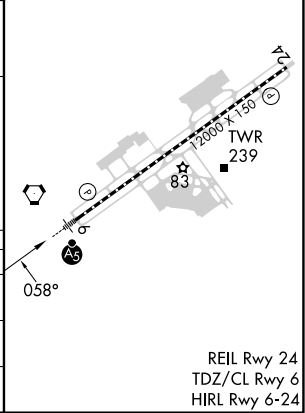
MISSED APPROACH: Climb to 500 then climbing right turn to 2300 direct CORFU and hold, continue climb-in-hold to 2300.

D-ATIS	FORT MYERS APP CON ★	FORT MYERS TOWER ★	GND CON	CLNC DEL	UNICOM
124.65	125.15 306.2 (RWY 6) 126.8 306.2 (RWY 24)	128.75(CTAF) 0 257.8	121.9 257.8	132.075	122.95

CPDLC



VGSI and RNAV glidepath not coincident (VGSI Angle 3.00/TCH 69°).					500 ↑	2300 ↗	CORFU △	
PEROE 1700 058° GP 3.00° TCH 55					CELBO 1500	See Planview for multiple IF locations.		
1 NM					4.5 NM			
CATEGORY					A	B	C	D
RNP 0.11 DA					296/24 269 (300-½)			
RNP 0.30 DA					375/30 348 (400-⅝)			
AUTHORIZATION REQUIRED								



SE-3, 07 AUG 2025 to 04 SEP 2025

SE-3, 07 AUG 2025 to 04 SEP 2025