

APP CRS  
**238°**

Rwy Idg **12000**  
TDZE **30**  
Apt Elev **30**

**RNAV (RNP) Z RWY 24**  
SOUTHWEST FLORIDA INTL (RSW)

RNP AR APCH - GPS

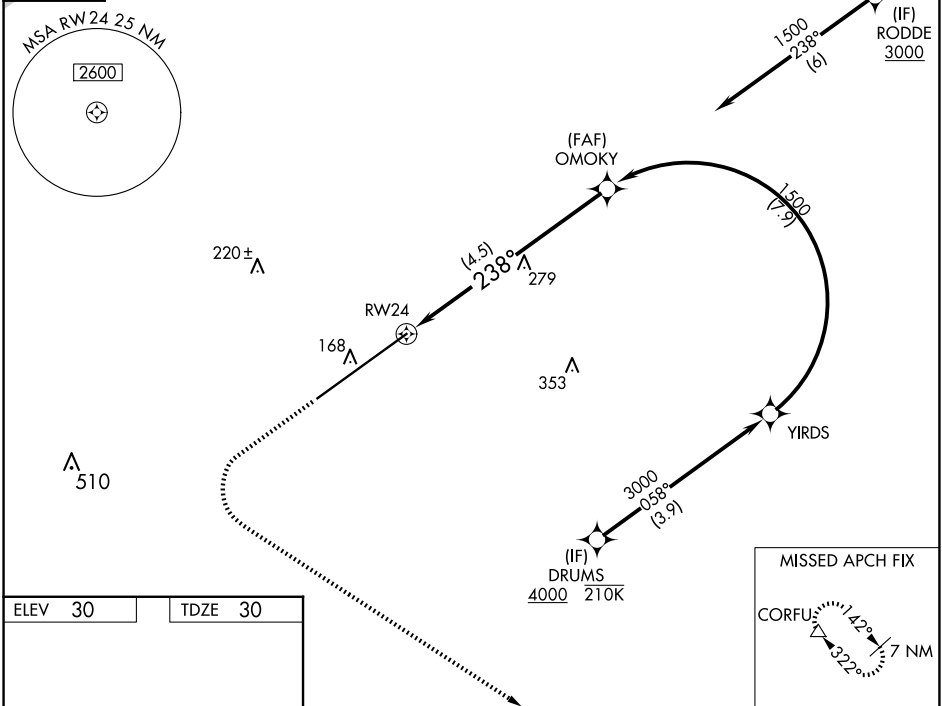
▼

For uncompensated Baro-VNAV systems, procedure NA below 4°C or above 54°C.

MISSED APPROACH: Climb to 500 then climbing left turn to 2300 direct CORFU and hold, continue climb-in-hold to 2300.

D-ATIS <b>124.65</b>	FORT MYERS APP CON ★ <b>125.15 306.2</b> (RWY 6) <b>126.8 306.2</b> (RWY 24)	FORT MYERS TOWER ★ <b>128.75</b> (CTAF) <b>0 257.8</b>	GND CON <b>121.9 257.8</b>	CLNC DEL <b>132.075</b>	UNICOM <b>122.95</b>
-------------------------	--	---	-------------------------------	----------------------------	-------------------------

CPDLC	
-------	--



ELEV 30 TDZE 30

238°

500 2300 CORFU

VGSI and RNAV glidepath not coincident (VGSI Angle 3.00/TCH 72).

See Planview for multiple IF locations.

OMOKY 1500 1500

GP 3.00° TCH 52

4.5 NM

REIL Rwy 24  
TDZ/CL Rwy 6  
HIRL Rwy 6-24

239 TWR  
83

2000 x 150

AS

CATEGORY	A	B	C	D
RNP 0.11 DA	294-7/8 264 (300-7/8)			
RNP 0.30 DA	397-1 367 (400-1)			

AUTHORIZATION REQUIRED

SE-3, 07 AUG 2025 to 04 SEP 2025

SE-3, 07 AUG 2025 to 04 SEP 2025