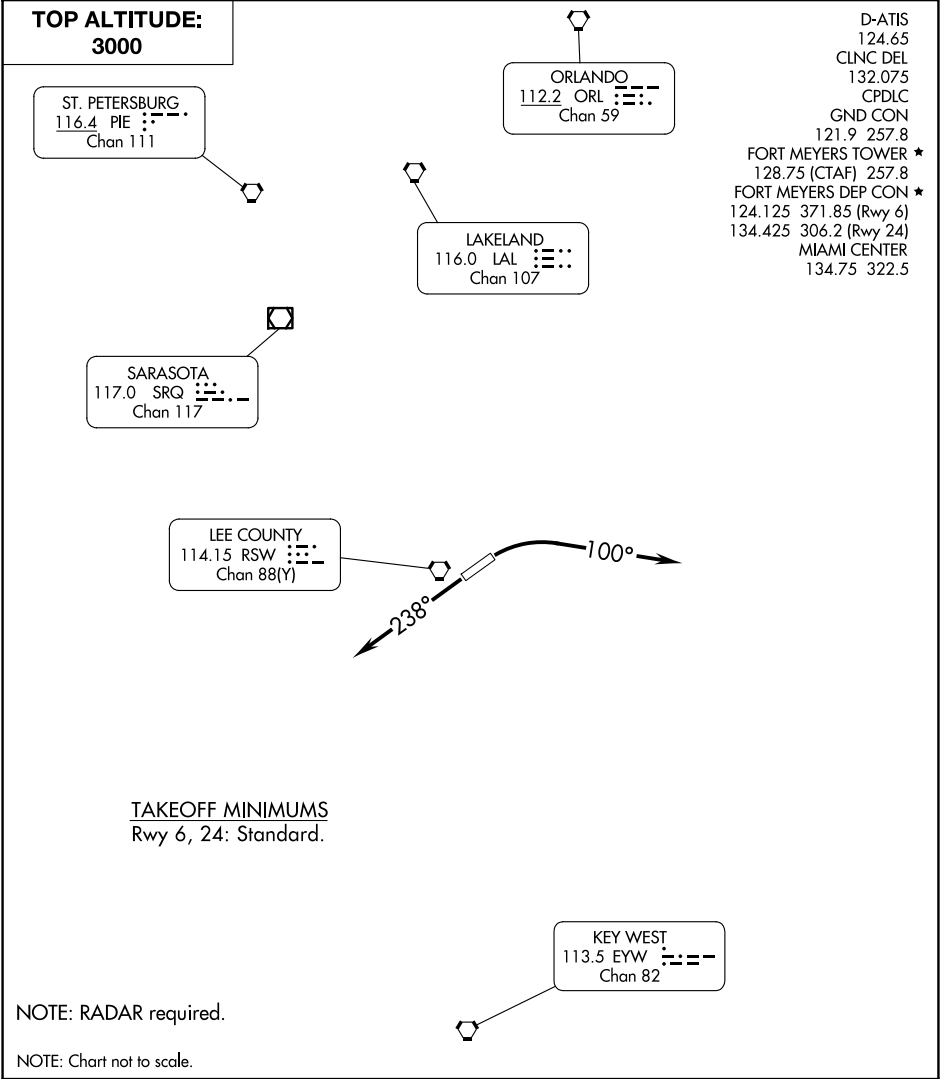


MOOKY SIX DEPARTURE



DEPARTURE ROUTE DESCRIPTION

TAKEOFF RUNWAY 6: Climbing right turn heading 100° or as assigned for RADAR vectors to join filed route, thence

TAKEOFF RUNWAY 24: Climb on heading 238° or as assigned for RADAR vectors to join filed route, thence

. . . . all aircraft maintain 3000 or assigned altitude. Expect further clearance to filed altitude within 10 minutes after departure.