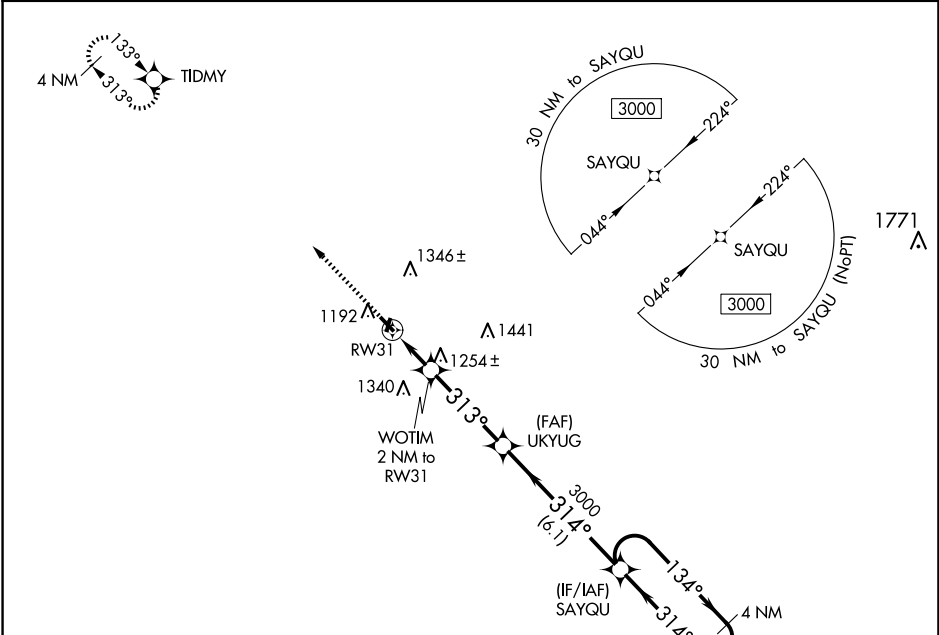


WAAS CH <b>72634</b> <b>W31A</b>	APP CRS <b>313°</b>	Rwy Idg TDZE <b>1132</b> Apt Elev <b>1132</b>
--	------------------------	---

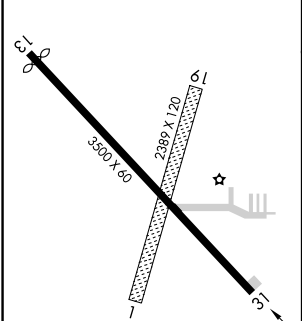
**RNAV (GPS) RWY 31**  
EAGLE GROVE MUNI (EAG)

 <b>NA</b>	DME/DME RNP-0.3 NA. Use Clarion altimeter setting, when not received, use Fort Dodge altimeter setting and increase all DA and MDA 20 feet, increase all LPV and LNAV/VNAV Cats visibilities 1/8 mile. Helicopter visibility reduction below 3/4 SM NA. Baro-VNAV NA. Night Landing: Rwy 13 NA. Circling NA to Rwys 1 and 19.	MISSED APPROACH: Climb to 3000 direct TIDMY and hold.
---------------	---	--

CAV AWOS-3 <b>126.575</b>	MINNEAPOLIS CENTER <b>134.0 288.3</b>	UNICOM <b>122.8 (CTAF) 0</b>
------------------------------	--	---------------------------------



ELEV <b>1132</b>	TDZE <b>1132</b>
------------------	------------------



MIRL Rwy 13-31  
REIL Rwys 13 and 31

<div><div>3000 ↑ TIDMY</div><div></div></div>		4 NM Holding Pattern	
* LNAV only.		UKYUG 3000 WOTIM 2 NM to RW31 RW31	
<p>Diagram details: A diagram showing a flight path starting from RW31 (indicated by a dashed line) and heading towards UKYUG. The distance from RW31 to UKYUG is 2 NM. The altitude at UKYUG is 3000. The distance from UKYUG to SAYQU is 3.8 NM. The altitude at SAYQU is 3000. The distance from SAYQU to the next point is 6.1 NM. The altitude at the next point is 3000. The diagram also shows a 134° heading from UKYUG to SAYQU and a 314° heading from SAYQU to the next point. The altitude at the next point is 3000. The diagram also shows a 1800 altitude at UKYUG and a 3000 altitude at SAYQU. The diagram also shows a 134° heading from UKYUG to SAYQU and a 314° heading from SAYQU to the next point. The altitude at the next point is 3000. The diagram also shows a 1800 altitude at UKYUG and a 3000 altitude at SAYQU. The diagram also shows a 134° heading from UKYUG to SAYQU and a 314° heading from SAYQU to the next point. The altitude at the next point is 3000. The diagram also shows a 1800 altitude at UKYUG and a 3000 altitude at SAYQU. The diagram also shows a 134° heading from UKYUG to SAYQU and a 314° heading from SAYQU to the next point. The altitude at the next point is 3000. The diagram also shows a 1800 altitude at UKYUG and a 3000 altitude at SAYQU. The diagram also shows a 134° heading from UKYUG to SAYQU and a 314° heading from SAYQU to the next point. The altitude at the next point is 3000. The diagram also shows a 1800 altitude at UKYUG and a 3000 altitude at SAYQU. The diagram also shows a 134° heading from UKYUG to SAYQU and a 314° heading from SAYQU to the next point. The altitude at the next point is 3000. The diagram also shows a 1800 altitude at UKYUG and a 3000 altitude at SAYQU. The diagram also shows a 134° heading from UKYUG to SAYQU and a 314° heading from SAYQU to the next point. The altitude at the next point is 3000. The diagram also shows a 1800 altitude at UKYUG and a 3000 altitude at SAYQU. The diagram also shows a 134° heading from UKYUG to SAYQU and a 314° heading from SAYQU to the next point. The altitude at the next point is 3000. The diagram also shows a 1800 altitude at UKYUG and a 3000 altitude at SAYQU. The diagram also shows a 134° heading from UKYUG to SAYQU and a 314° heading from SAYQU to the next point. The altitude at the next point is 3000. The diagram also shows a 1800 altitude at UKYUG and a 3000 altitude at SAYQU. The diagram also shows a 134° heading from UKYUG to SAYQU and a 314° heading from SAYQU to the next point. The altitude at the next point is 3000. The diagram also shows a 1800 altitude at UKYUG and a 3000 altitude at SAYQU. The diagram also shows a 134° heading from UKYUG to SAYQU and a 314° heading from SAYQU to the next point. The altitude at the next point is 3000. The diagram also shows a 1800 altitude at UKYUG and a 3000 altitude at SAYQU. The diagram also shows a 134° heading from UKYUG to SAYQU and a 314° heading from SAYQU to the next point. The altitude at the next point is 3000. The diagram also shows a 1800 altitude at UKYUG and a 3000 altitude at SAYQU. The diagram also shows a 134° heading from UKYUG to SAYQU and a 314° heading from SAYQU to the next point. The altitude at the next point is 3000. The diagram also shows a 1800 altitude at UKYUG and a 3000 altitude at SAYQU. The diagram also shows a 134° heading from UKYUG to SAYQU and a 314° heading from SAYQU to the next point. The altitude at the next point is 3000. The diagram also shows a 1800 altitude at UKYUG and a 3000 altitude at SAYQU. The diagram also shows a 134° heading from UKYUG to SAYQU and a 314° heading from SAYQU to the next point. The altitude at the next point is 3000. The diagram also shows a 1800 altitude at UKYUG and a 3000 altitude at SAYQU. The diagram also shows a 134° heading from UKYUG to SAYQU and a 314° heading from SAYQU to the next point. The altitude at the next point is 3000. The diagram also shows a 1800 altitude at UKYUG and a 3000 altitude at SAYQU. The diagram also shows a 134° heading from UKYUG to SAYQU and a 314° heading from SAYQU to the next point. The altitude at the next point is 3000. The diagram also shows a 1800 altitude at UKYUG and a 3000 altitude at SAYQU. The diagram also shows a 134° heading from UKYUG to SAYQU and a 314° heading from SAYQU to the next point. The altitude at the next point is 3000. The diagram also shows a 1800 altitude at UKYUG and a 3000 altitude at SAYQU. The diagram also shows a 134° heading from UKYUG to SAYQU and a 314° heading from SAYQU to the next point. The altitude at the next point is 3000. The diagram also shows a 1800 altitude at UKYUG and a 3000 altitude at SAYQU. The diagram also shows a 134° heading from UKYUG to SAYQU and a 314° heading from SAYQU to the next point. The altitude at the next point is 3000. The diagram also shows a 1800 altitude at UKYUG and a 3000 altitude at SAYQU. The diagram also shows a 134° heading from UKYUG to SAYQU and a 314° heading from SAYQU to the next point. The altitude at the next point is 3000. The diagram also shows a 1800 altitude at UKYUG and a 3000 altitude at SAYQU. The diagram also shows a 134° heading from UKYUG to SAYQU and a 314° heading from SAYQU to the next point. The altitude at the next point is 3000. The diagram also shows a 1800 altitude at UKYUG and a 3000 altitude at SAYQU. The diagram also shows a 134° heading from UKYUG to SAYQU and a 314° heading from SAYQU to the next point. The altitude at the next point is 3000. The diagram also shows a 1800 altitude at UKYUG and a 3000 altitude at SAYQU. The diagram also shows a 134° heading from UKYUG to SAYQU and a 314° heading from SAYQU to the next point. The altitude at the next point is 3000. The diagram also shows a 1800 altitude at UKYUG and a 3000 altitude at SAYQU. The diagram also shows a 134° heading from UKYUG to SAYQU and a 314° heading from SAYQU to the next point. The altitude at the next point is 3000. The diagram also shows a 1800 altitude at UKYUG and a 3000 altitude at SAYQU. The diagram also shows a 134° heading from UKYUG to SAYQU and a 314° heading from SAYQU to the next point. The altitude at the next point is 3000. The diagram also shows a 1800 altitude at UKYUG and a 3000 altitude at SAYQU. The diagram also shows a 134° heading from UKYUG to SAYQU and a 314° heading from SAYQU to the next point. The altitude at the next point is 3000. The diagram also shows a 1800 altitude at UKYUG and a 3000 altitude at SAYQU. The diagram also shows a 134° heading from UKYUG to SAYQU and a 314° heading from SAYQU to the next point. The altitude at the next point is 3000. The diagram also shows a 1800 altitude at UKYUG and a 3000 altitude at SAYQU. The diagram also shows a 134° heading from UKYUG to SAYQU and a 314° heading from SAYQU to the next point. The altitude at the next point is 3000. The diagram also shows a 1800 altitude at UKYUG and a 3000 altitude at SAYQU. The diagram also shows a 134° heading from UKYUG to SAYQU and a 314° heading from SAYQU to the next point. The altitude at the next point is 3000. The diagram also shows a 1800 altitude at UKYUG and a 3000 altitude at SAYQU. The diagram also shows a 134° heading from UKYUG to SAYQU and a 314° heading from SAYQU to the next point. The altitude at the next point is 3000. The diagram also shows a 1800 altitude at UKYUG and a 3000 altitude at SAYQU. The diagram also shows a 134° heading from UKYUG to SAYQU and a 314° heading from SAYQU to the next point. The altitude at the next point is 3000. The diagram also shows a 1800 altitude at UKYUG and a 3000 altitude at SAYQU. The diagram also shows a 134° heading from UKYUG to SAYQU and a 314° heading from SAYQU to the next point. The altitude at the next point is 3000. The diagram also shows a 1800 altitude at UKYUG and a 3000 altitude at SAYQU. The diagram also shows a 134° heading from UKYUG to SAYQU and a 314° heading from SAYQU to the next point. The altitude at the next point is 3000. The diagram also shows a 1800 altitude at UKYUG and a 3000 altitude at SAYQU. The diagram also shows a 134° heading from UKYUG to SAYQU and a 314° heading from SAYQU to the next point. The altitude at the next point is 3000. The diagram also shows a 1800 altitude at UKYUG and a 3000 altitude at SAYQU. The diagram also shows a 134° heading from UKYUG to SAYQU and a 314° heading from SAYQU to the next point. The altitude at the next point is 3000. The diagram also shows a 1800 altitude at UKYUG and a 3000 altitude at SAYQU. The diagram also shows a 134° heading from UKYUG to SAYQU and a 314° heading from SAYQU to the next point. The altitude at the next point is 3000. The diagram also shows a 1800 altitude at UKYUG and a 3000 altitude at SAYQU. The diagram also shows a 134° heading from UKYUG to SAYQU and a 314° heading from SAYQU to the next point. The altitude at the next point is 3000. The diagram also shows a 1800 altitude at UKYUG and a 3000 altitude at SAYQU. The diagram also shows a 134° heading from UKYUG to SAYQU and a 314° heading from SAYQU to the next point. The altitude at the next point is 3000. The diagram also shows a 1800 altitude at UKYUG and a 3000 altitude at SAYQU. The diagram also shows a 134° heading from UKYUG to SAYQU and a 314° heading from SAYQU to the next point. The altitude at the next point is 3000. The diagram also shows a 1800 altitude at UKYUG and a 3000 altitude at SAYQU. The diagram also shows a 134° heading from UKYUG to SAYQU and a 314° heading from SAYQU to the next point. The altitude at the next point is 3000. The diagram also shows a 1800 altitude at UKYUG and a 3000 altitude at SAYQU. The diagram also shows a 134° heading from UKYUG to SAYQU and a 314° heading from SAYQU to the next point. The altitude at the next point is 3000. The diagram also shows a 1800 altitude at UKYUG and a 3000 altitude at SAYQU. The diagram also shows a 134° heading from UKYUG to SAYQU and a 314° heading from SAYQU to the next point. The altitude at the next point is 3000. The diagram also shows a 1800 altitude at UKYUG and a 3000 altitude at SAYQU. The diagram also shows a 134° heading from UKYUG to SAYQU and a 314° heading from SAYQU to the next point. The altitude at the next point is 3000. The diagram also shows a 1800 altitude at UKYUG and a 3000 altitude at SAYQU. The diagram also shows a 134° heading from UKYUG to SAYQU and a 314° heading from SAYQU to the next point. The altitude at the next point is 3000. The diagram also shows a 1800 altitude at UKYUG and a 3000 altitude at SAYQU. The diagram also shows a 134° heading from UKYUG to SAYQU and a 314° heading from SAYQU to the next point. The altitude at the next point is 3000. The diagram also shows a 1800 altitude at UKYUG and a 3000 altitude at SAYQU. The diagram also shows a 134° heading from UKYUG to SAYQU and a 314° heading from SAYQU to the next point. The altitude at the next point is 3000. The diagram also shows a 1800 altitude at UKYUG and a 3000 altitude at SAYQU. The diagram also shows a 134° heading from UKYUG to SAYQU and a 314° heading from SAYQU to the next point. The altitude at the next point is 3000. The diagram also shows a 1800 altitude at UKYUG and a 3000 altitude at SAYQU. The diagram also shows a 134° heading from UKYUG to SAYQU and a 314° heading from SAYQU to the next point. The altitude at the next point is 3000. The diagram also shows a 1800 altitude at UKYUG and a 3000 altitude at SAYQU. The diagram also shows a 134° heading from UKYUG to SAYQU and a 314° heading from SAYQU to the next point. The altitude at the next point is 3000. The diagram also shows a 1800 altitude at UKYUG and a 3000 altitude at SAYQU. The diagram also shows a 134° heading from UKYUG to SAYQU and a 314° heading from SAYQU to the next point. The altitude at the next point is 3000. The diagram also shows a 1800 altitude at UKYUG and a 3000 altitude at SAYQU. The diagram also shows a 134° heading from UKYUG to SAYQU and a 314° heading from SAY</p>			