

WAAS CH <b>69418</b> <b>W25A</b>	APP CRS <b>247°</b>	Rwy Idg TDZE Apt Elev	<b>3434</b> <b>8</b> <b>9</b>
--	------------------------	-----------------------------	-------------------------------------

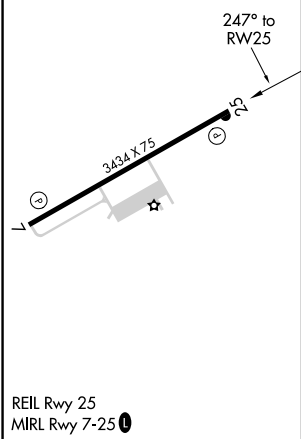
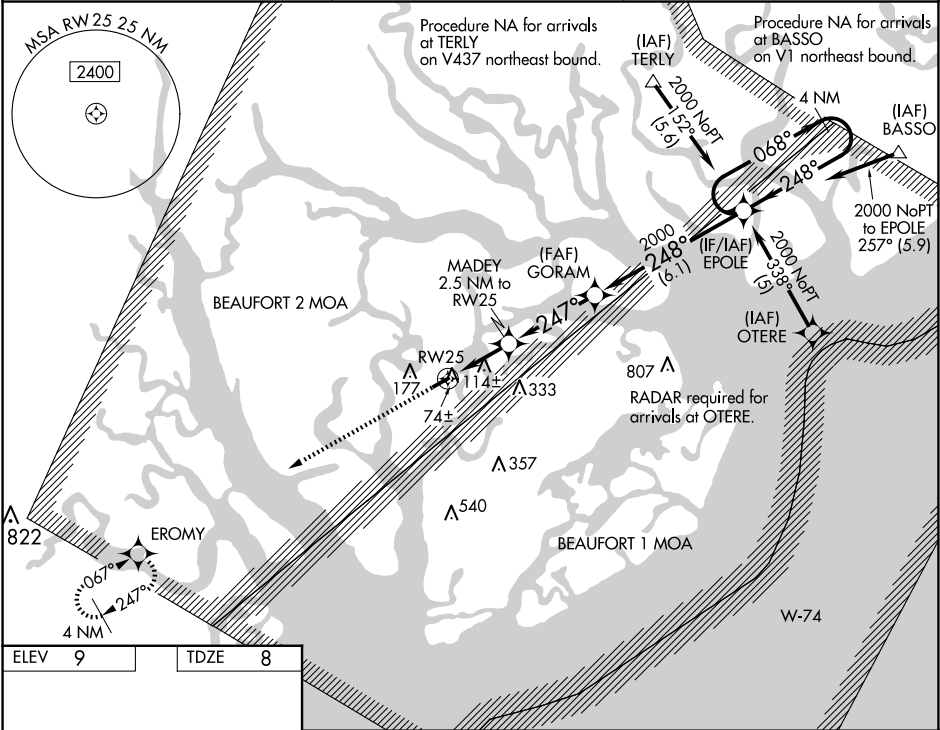
RNAV (GPS) RWY 25  
BEAUFORT EXEC (A.R.W)

**ASR**

For uncompensated Baro-VNAV systems, LNAV/VNAV NA below -15°C (5°F) or above 54°C (130°F). DME/DME RNP-0.3 NA. When local altimeter setting not received, use Beaufort MCAS (Merritt Fld) altimeter setting and increase LPV DA to 226, LNAV/VNAV DA to 352, and all MDA 20 feet. VDP and Baro-VNAV NA when using Beaufort MCAS (Merritt Fld) altimeter setting.

**MISSED APPROACH:**  
Climb to 2000 direct EROMY and hold.

AWOS-3 <b>119.675</b>	BEAUFORT APP CON★ <b>125.125 292.125</b>	UNICOM <b>122.7 (CTAF) 0</b>
--------------------------	---	---------------------------------



2000 EROMY		VGSi and RNAV glidepath not coincident (VGSi Angle 3.00/TCH 25).	
*LNAV only.		GORAM 2000	
MADEY 2.5 NM to RW25		EPOLE 4 NM Holding Pattern	
*1.1 NM to RW25		2000	
RW25		GP 3.00° TCH 40	
-1.1 -1.4 -3.5 NM -6.1 NM			
CATEGORY	A	B	C
LPV DA	208-1	200 (200-1)	NA
LNAV/VNAV DA	334-1¼	326 (400-1¼)	NA
LNAV MDA	380-1	372 (400-1)	NA
CIRCLING	480-1	471 (500-1)	640-1¾ 631 (700-1¾)

SE-2, 07 AUG 2025 to 04 SEP 2025

SE-2, 07 AUG 2025 to 04 SEP 2025