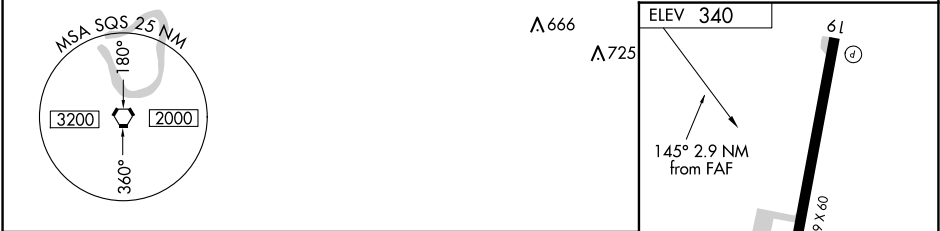
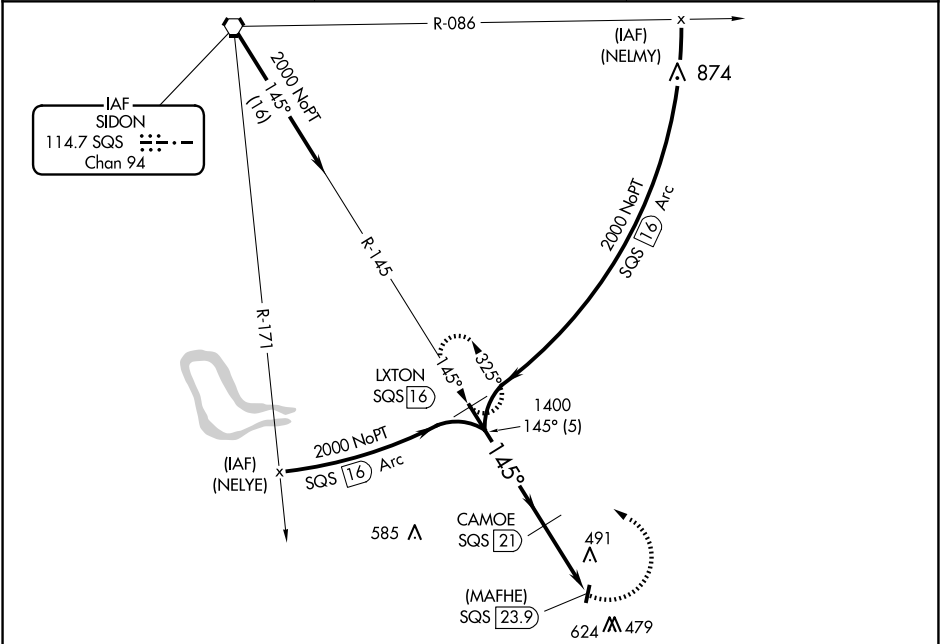


VORTAC SQS	APP CRS	Rwy Idg	N/A
114.7	145°	TDZE	N/A
Chan 94		Apt Elev	340

VOR/DME or GPS-A  
C A MOORE (19M)

<p>▼ Use Greenwood altimeter setting. ▲ NA Procedure NA at night. Helicopter visibility reduction below 1 SM NA.</p>	<p>MISSED APPROACH: Climbing left turn to 2000 on SQS R-145 to LXTON 16 DME and hold.</p>
--	---

GWO ASQS 119,975	MEMPHIS CENTER 132.5 259.1	CTAF 122.9
---------------------	-------------------------------	---------------



<div><div><div>LXTON SQS 16</div><div>2000</div><div>Procedure Turn NA</div></div><div><div>145°</div><div>CAMOE SQS 21</div><div>1400</div><div>(MAFHE) SQS 23.9</div></div><div><div>5 NM</div><div>2.9 NM</div></div></div>					<div><div>2000</div><div>SQS R-145</div><div>LXTON SQS 16</div></div>	<div><div>☆</div><div>319</div><div>0.5% Up</div><div>1</div></div>
CATEGORY	A	B	C	D		
CIRCLING	920-1 580 (600-1)	960-1¼ 620 (700-1¼)	1020-2 680 (700-2)	NA	MIRL Rwy 1-19	

MIRL Rwy 1-19