

WAAS CH 81923 W18A	APP CRS 174°	Rwy Ldg 5001 TDZE 1177 Apt Elev 1193
--	------------------------	---

RNAV (GPS) RWY 18
SUNDANCE (HSD)

RNP APCH - GPS.

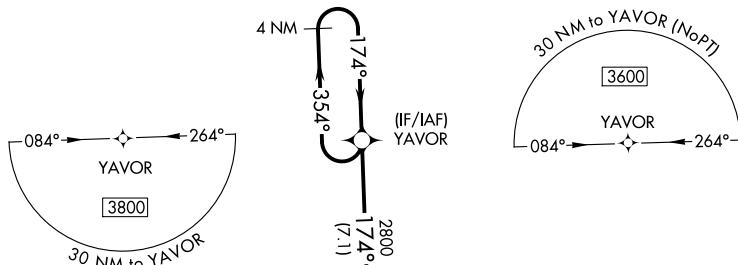


For uncompensated Baro-VNAV systems, LNAV/VNAV NA below -17°C or above 54°C. Baro-VNAV and VDP NA when using PWA altimeter setting.

MISSED APPROACH:
Climb to 3200 direct
NUFAD and hold.

AWOS-3
120,975

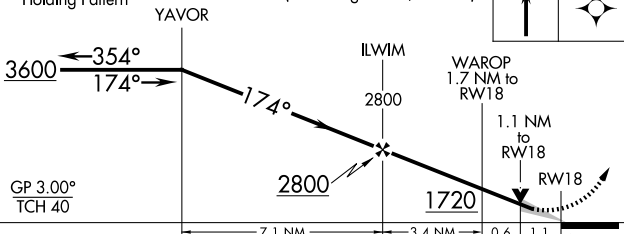
OKC CITY APP CON
124.6 266.8

CLNC DEL
123.7UNICOM
122.7 (CTAF) **L**

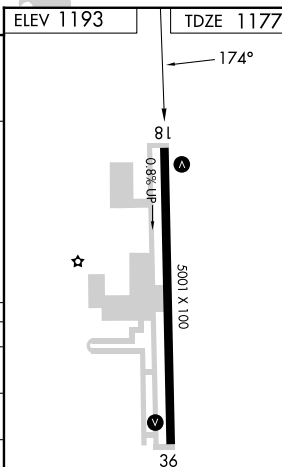
MISSED APCH FIX
NUFAD

4 NM
Holding Pattern

VGSI and RNAV glidepath not coincident
(VGSI Angle 3.00/TCH 30).



CATEGORY		A		B		C		D	
LPV	DA	1427-1		250 (300-1)				NA	
INAV/ VNAV	DA	1473-1½		296 (300-1½)				NA	
INAV	MDA	1540-1		363 (400-1)		1540-1½ 363 (400-1½)		NA	
CIRCLING		1740-1 547 (600-1)		1840-1 647 (700-1)		1840-1¾ 647 (700-1¾)		NA	



OKLAHOMA CITY, OKLAHOMA

Amdt 1F 15MAY25

35°36'N-97°42'W

SUNDANCE (HSD)

RNAV (GPS) RWY 18