

WAAS
CH **57927**
W12A

APP CRS
118°

Rwy Ldg
TDZE **2609**
Apt Elev **2615**

RNAV (GPS) RWY 12

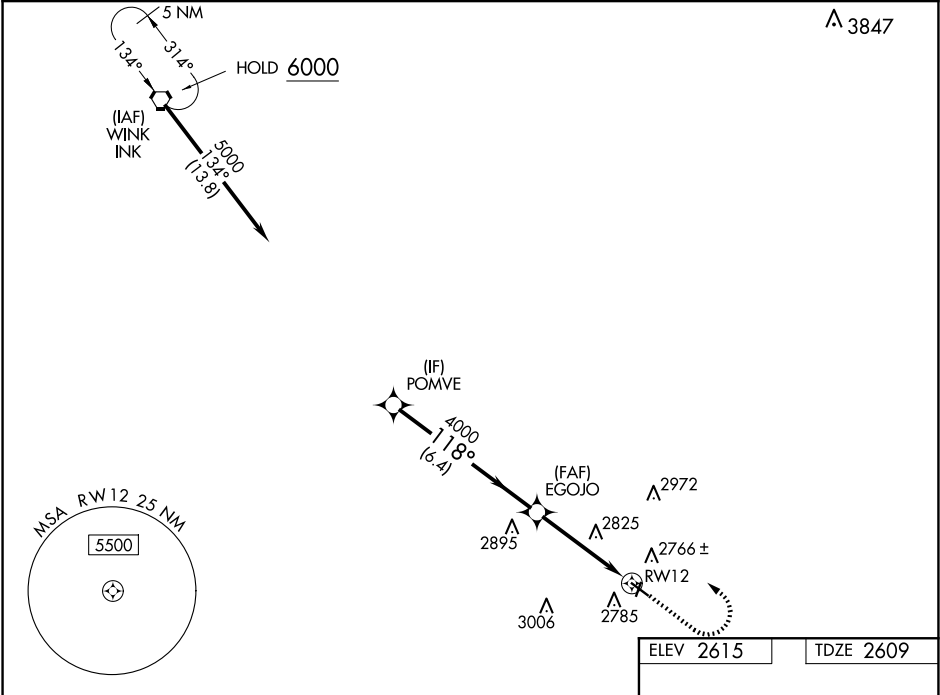
ROY HURD MEML (E01)

RNP APCH GPS

▼ When local altimeter setting not received, use INK altimeter setting and increase all MDAs 80 feet and LNAV visibility Cat C ¾ SM, and LP visibility Cat C ½ SM, and
▲ Circling visibility Cat C ½ SM. Rwy 12 helicopter visibility reduction below 1 SM NA. Straight-in Rwy 12 NA at night, Circling Rwy 1, 12, 19 NA at night.

MISSED APPROACH: Climb to 3200 then climbing left turn to 6000 direct INK VORTAC and hold.

AWOS-3PT 118.225	FORT WORTH CENTER 133.1 298.95	UNICOM 122.8 (CTAF) 0
----------------------------	--	---------------------------------



VGSI and descent angles not coincident (VGSI Angle 3.00/TCH 24).

3200

6000

INK

CATEGORY	A	B	C	D
LP MDA	3100-1	491 (500-1)	3100-1⅜ 491 (500-1⅜)	NA
LNAV MDA	3120-1	511 (600-1)	3120-1⅜ 511 (600-1⅜)	NA
CIRCLING	3280-1	665 (700-1)	3280-1¾ 665 (700-1¾)	NA

MIRL Rwy 1-19 and 12-30 0

SC-3, 07 AUG 2025 to 04 SEP 2025

SC-3, 07 AUG 2025 to 04 SEP 2025