

WAAS CH 72918 W35A	APP CRS 350°	Rwy Idg 5002 TDZE 3278 Apt Elev 3315
--	------------------------	---

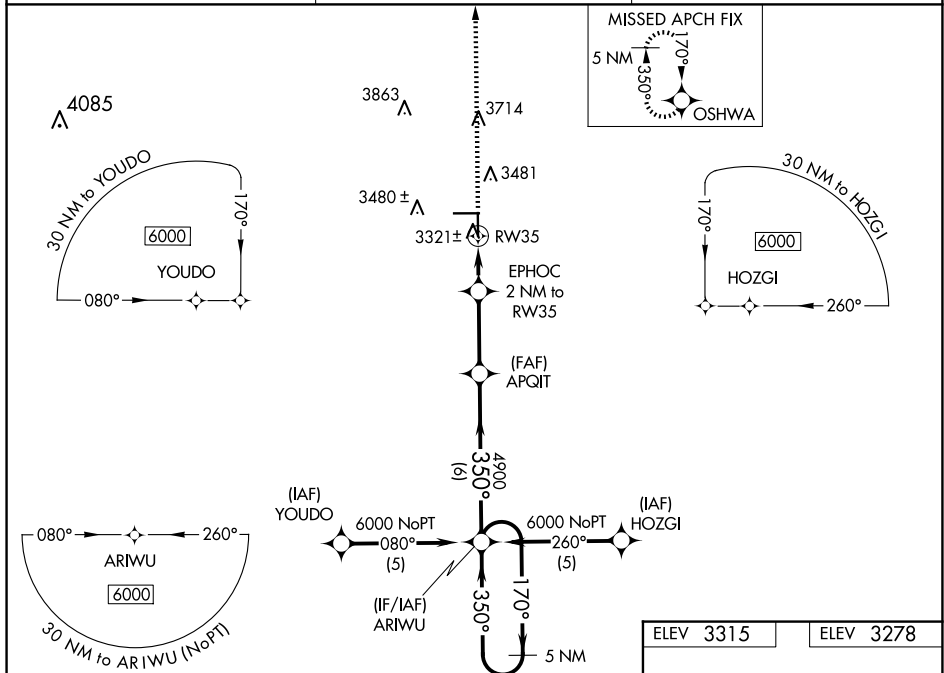
RNAV (GPS) RWY 35
GAINES COUNTY (GNC)

GAINES COUNTY (GNC)

T For uncompensated Baro-VNAV systems, LNAV/VNAV NA below -21°C (-5°F) or above 54°C (130°F).
A DME/DME RNP-0.3 NA. When local altimeter setting not received, use Midland Intl Air and Space Port altimeter setting and increase LPV DA to 3704 feet and all visibilities ½ SM; increase LNAV/VNAV DA to 3767 feet and all visibilities ¾ SM; increase all MDAs 180 feet and visibility LNAV and Circling Cat C ½ SM. Baro-VNAV and VDP NA when using Midland Intl Air and Space Port altimeter setting.

MISSED APPROACH:
Climb to 6000 direct
OSHOWA and hold,
continue climb-in-
hold to 6000.

AWOS-3 118.075	FORT WORTH CENTER 132.6 269.05	UNICOM 122.8 (CTAF) 0
--------------------------	--	--



6000

OSHA

VGSi and RNAV glidepath not coincident (VGSi Angle 3.00/TCH 37).

APQIT 4900

ARIWU 1700

5 NM Holding Pattern

*LNAV only.

EPHOC 2 NM to RW35

* 0.9 NM to RW35

RW35

3940*

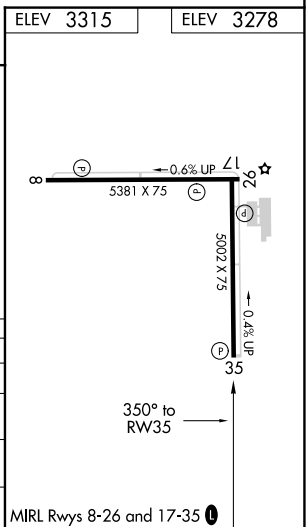
3500

1700

GP 3.00° TCH 40

0.9 1.1 2.9 NM 6 NM

CATEGORY	A	B	C	D
LPV DA	3528-1	250 (300-1)		NA
LNAV/VNAV DA	3591-1¼	313 (300-1¼)		NA
LNAV MDA	3580-1	302 (300-1)		NA
CIRCLING	3840-1 525 (600-1)	3880-1 565 (600-1)	3940-1¾ 625 (700-1¾)	NA



RNAV (GPS) RWY 35