

WAAS CH <b>99343</b> <b>W17A</b>	APP CRS <b>167°</b>	Rwy Idg TDZE Apt Elev	<b>5000</b> <b>2991</b> <b>2991</b>
--	------------------------	-----------------------------	---

RNAV (GPS) RWY 17

ATWOOD-RAWLINS COUNTY CITY-COUNTY (ADT)

RNP APCH

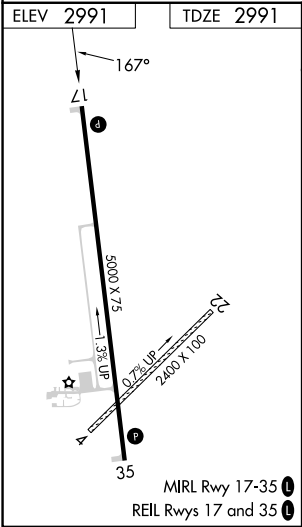
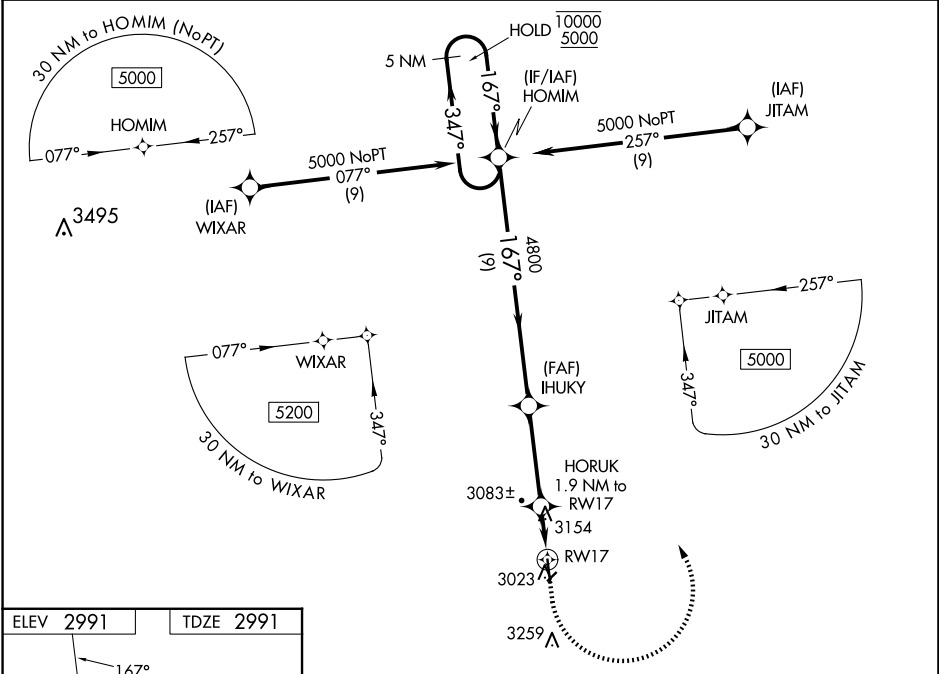
▼

▲ NA

Circling NA to Rwy 4 and 22. Circling Rwy 35 NA at night. Baro-VNAV and VDP NA when using Colby altimeter setting. Rwy 17 helicopter visibility reduction below ¾ SM NA. For uncompensated Baro-VNAV systems, LNAV/VNAV NA below -20°C or above 54°C. When local altimeter setting not received, use Colby altimeter setting: increase all DAs to 3326 feet; increase all MDAs 100 feet and visibility Cats C and D ¼ mile.

MISSED APPROACH:  
Climb to 3500 then climbing left turn to 5000 direct HOMIM and hold.

AWOS-3 <b>118.675</b>	DENVER CENTER <b>132.7 226.675</b>	UNICOM <b>122.7 (CTAF) 0</b>
--------------------------	---------------------------------------	---------------------------------



5 NM Holding Pattern		3500	5000	HOMIM
HOMIM		*LNAV only		
10000 5000		HORUK 1.9 NM to RW17		
GP 3.00° TCH 41		*1.2 NM to RW17		
4800		RW17		
9 NM		0.7		
3.6 NM		1.2		
CATEGORY	A	B	C	D
LPV DA	3241-1 250 (300-1)			
LNAV/VNAV DA	3241-1 250 (300-1)			
LNAV MDA	3420-1	429 (500-1)	3420-1½	429 (500-1½)
CIRCLING	3480-1	489 (500-1)	3560-1½ 569 (600-1½)	3620-2 629 (700-2)