

APP CRS	Rwy Idg	3201
052°	TDZE	84
	Apt Elev	85

RNAV (GPS) RWY 5

ST GEORGE (6J2)

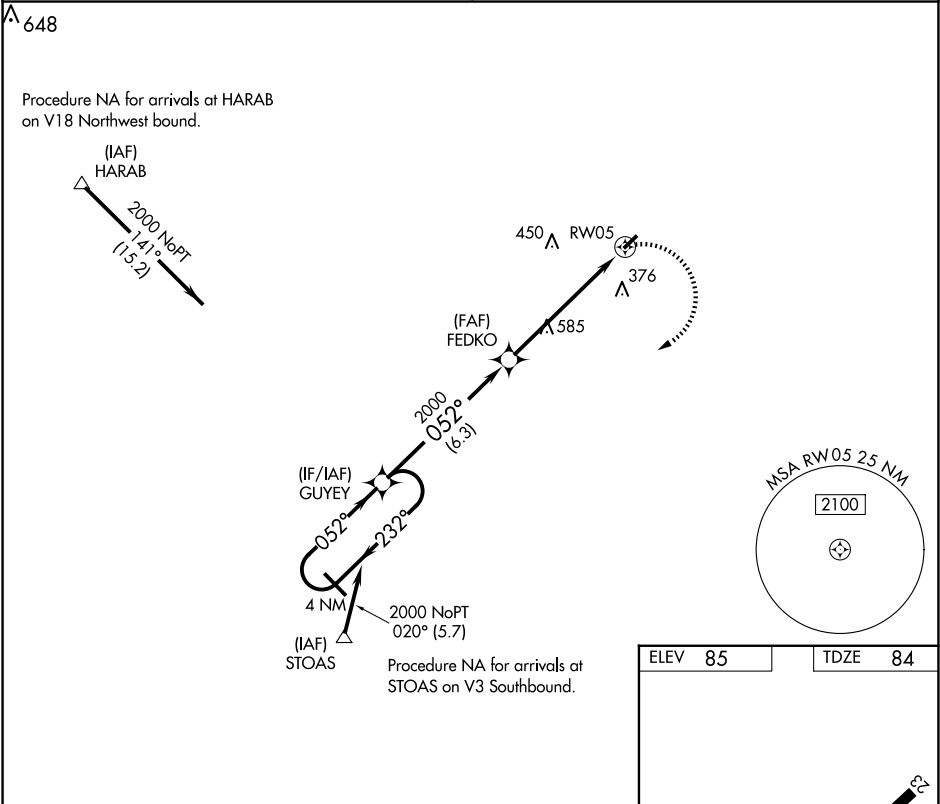
▼

▲ NA

DME/DME RNP-0.3 NA. Helicopter visibility reduction below 1 SM NA. Use Summerville altimeter setting; when not received, use Charleston altimeter setting and increase all MDAs 40 feet, increase LNAV and Circling Cat C visibility ¼ mile, increase LNAV and Circling Cat D visibility ½ mile. Procedure NA at night.

MISSED APPROACH: Climbing right turn to 2000 direct GUYEY and hold.

CHARLESTON APP CON	UNICOM
120.7 306.925	122.8 (CTAF)



4 NM Holding Pattern

2000

← 232°

052° →

2000

GUYEY

FEDKO

2000

GUYEY

3.05°

TCH 45

6.3 NM

5.8 NM

RWY05

CATEGORY	A	B	C	D
LNAV MDA	940-1¼	856 (900-1¼)	940-2½ 856 (900-2½)	940-2¾ 856 (900-2¾)
CIRCLING	940-1¼	855 (900-1¼)	940-2½ 855 (900-2½)	940-2¾ 855 (900-2¾)

ELEV 85

TDZE 84

2201 x 60

052°

LIRL Rwy 5-23

SE-2, 07 AUG 2025 to 04 SEP 2025

SE-2, 07 AUG 2025 to 04 SEP 2025