

CALDWELL, TEXAS

AL-6743 (FAA)

24361

APP CRS	Rwy Idg	3252
146°	TDZE	391
	Apt Elev	391

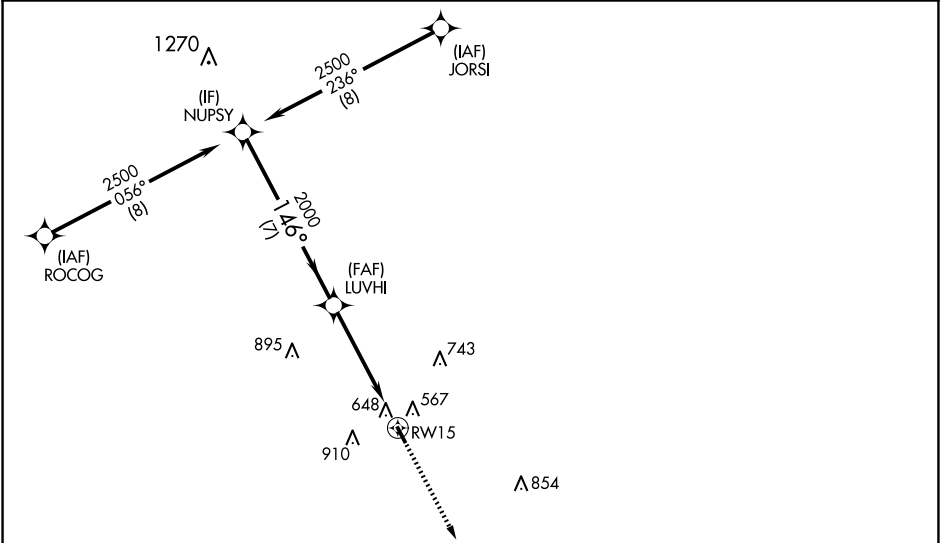
RNAV (GPS) RWY 15

CALDWELL MUNI (RWV)

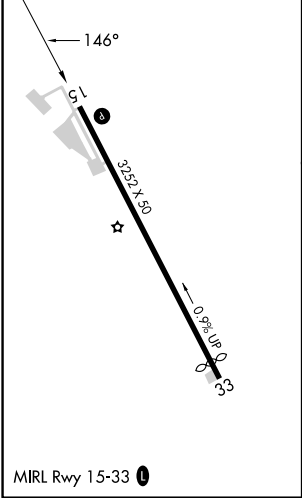
RNP APCH - GPS.
RADAR required.
When local altimeter setting not received, use College Station altimeter setting and increase all MDA 60 feet. Circling NA east of Rwy 15-33. Procedure NA at night. Rwy 15 helicopter visibility reduction below 1 SM NA.

MISSED APPROACH: Climb to 2000 direct KOKEC and hold.

AWOS-3PT 118.35	HOUSTON APP CON 134.3 360.85	CTAF 122.9
--------------------	---------------------------------	---------------



ELEV 391	TDZE 391
----------	----------



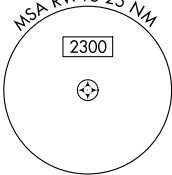
CALDWELL, TEXAS
Orig-C 26DEC24

30°31'N-96°42'W

RNAV (GPS) RWY 15

CALDWELL MUNI (RWV)

VGSI and descent angles not coincident (VGSI Angle 3.00/TCH 42).			
NUPSY 2500		LUVHI 2000	
7 NM		4.9 NM	
CATEGORY	A	B	C
LNAV MDA	960-1	569 (600-1)	NA
CIRCLING	1000-1 609 (700-1)	1220-1¼ 829 (900-1¼)	NA



SC-5, 07 AUG 2025 to 04 SEP 2025