

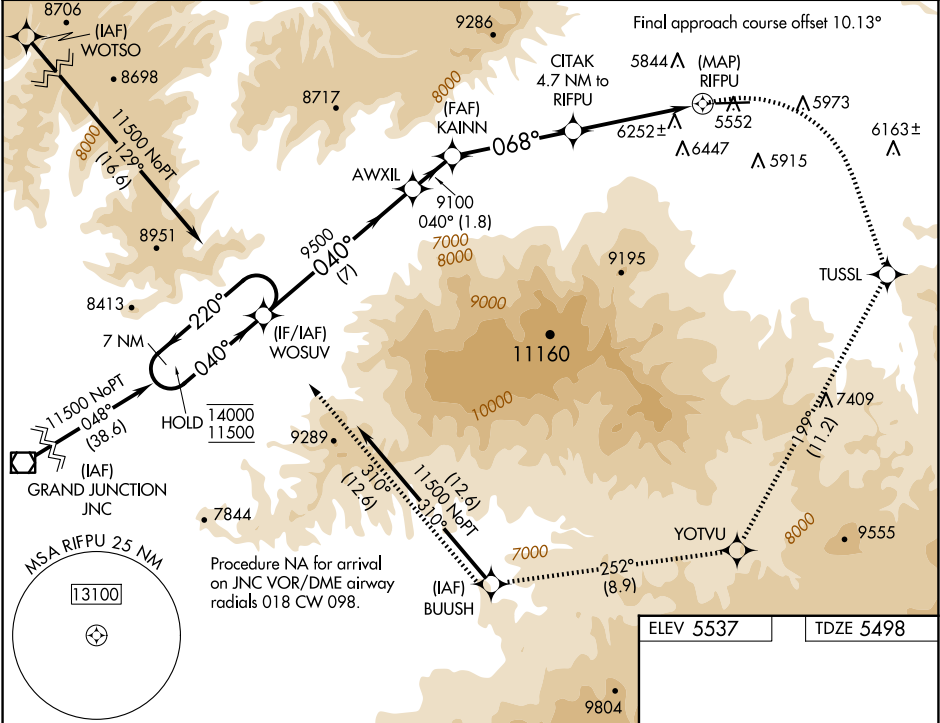
APP CRS	Rwy Ldg	7000
068°	TDZE	5498
	Apt Elev	5537

# RNAV (GPS) Y RWY 8

RIFLE GARFIELD COUNTY (RIL)

RNP APCH - GPS.	MISSED APPROACH: Climbing right turn to 14000 direct TUSSL and on track 199° to YOTVU and on track 252° to BUUSH and on track 310° to WOSUV and hold, continue climb-in-hold to 14000.
<div><div>▼</div><div>▲</div><div>❄</div></div> <div>Circling NA south of Rwy 8-26 at night.</div> <div>-13°C</div>	

ASOS 135.275	DENVER CENTER 134.95 327.075	UNICOM 122.8 (CTAF) 0
-----------------	---------------------------------	--------------------------



7 NM Holding Pattern	14000	TUSSL	tr 199°	YOTVU	tr 252°	BUUSH	tr 310°	WOSUV
14000	220°	AWXIL	9500	040°	9100	068°	7460	RIFPU
11500	040°	9500	040°	9100	068°	7460	7460	7460
		7 NM	1.8 NM	4.4 NM	4.7 NM	0.5 NM		
CATEGORY	A	B	C	D				
LNAB MDA	7420-1¼ 1922 (1900-1¼)	7420-1½ 1922 (1900-1½)	7420-3 1922 (1900-3)					
CIRCLING	7420-1¼ 1883 (1900-1¼)	7420-1½ 1883 (1900-1½)	7420-3 1883 (1900-3)	8100-3 2563 (2600-3)				

ELEV 5537 TDZE 5498

068°

7000 X 100

1.0% UP

26

HIRL Rwy 8-26 0  
REIL Rwy 8 0

SW-1, 07 AUG 2025 to 04 SEP 2025

SW-1, 07 AUG 2025 to 04 SEP 2025