

RIFLE, COLORADO

AL-6741 (FAA)

25163

APP CRS	Rwy Ldg	7000
259°	TDZE	5537
	Apt Elev	5537

RNAV (GPS) W RWY 26
RIFLE GARFIELD COUNTY(RIL)

RNP APCH - GPS.	
-----------------	--

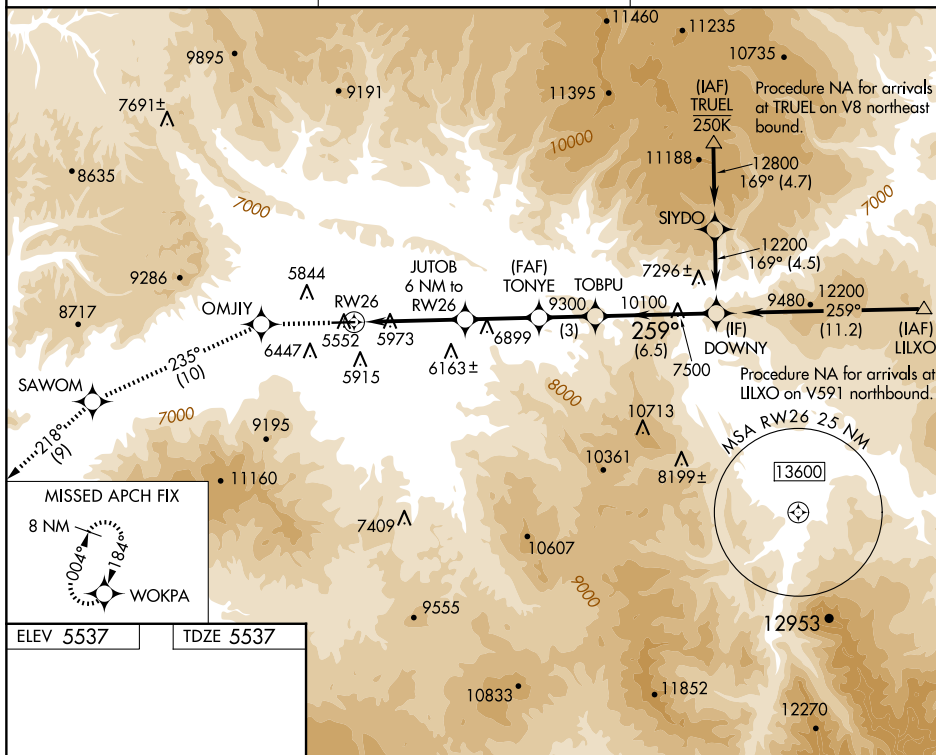
T Rwy 26 helicopter visibility reduction below $\frac{3}{4}$ SM NA.
A Inop table does not apply. Circling NA south of
❄ -13°C Rwy 8-26 at night.

ODALS

MISSED APPROACH: Climb to 14000 direct OMJIY and on track 235° to SAWOM and on track 218° to WOKPA and hold. continue climb-in-hold to 14000.

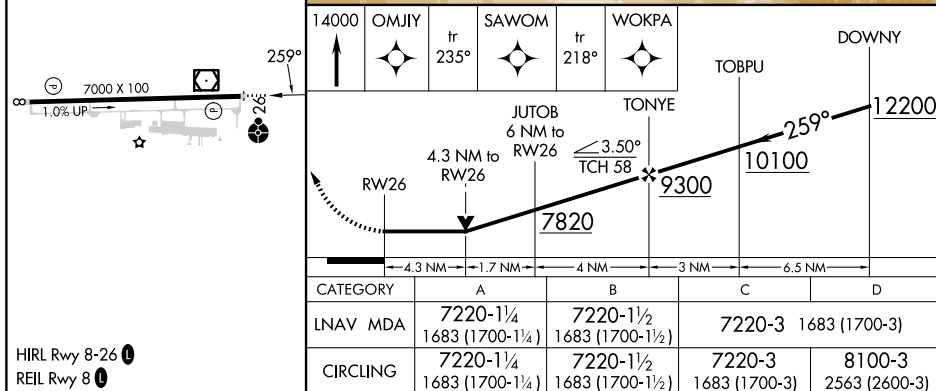
ASOS
135.275

DENVER CENTER
134.95 327.075

UNICOM
122.8 (CTAF) **L**

ELEV 5537

TDZE 5537



RIFLE, COLORADO

Amdt 2 15JUN23

RIFLE GARFIELD COUNTY (RIL)

39°32'N-107°44'W

RNAV (GPS) W RWY 26

SW-1, 07 AUG 2025 to 04 SEP 2025

SW-1, 07 AUG 2025 to 04 SEP 2025