

APP CRS	Rwy Ldg	7000
259°	TDZE	5537
	Apt Elev	5537

RNAV (RNP) Y RWY 26

RIFLE GARFIELD COUNTY (RIL)

RNP AR APCH - GPS. Authorization required. From TRUEL or SLOUM: RF.

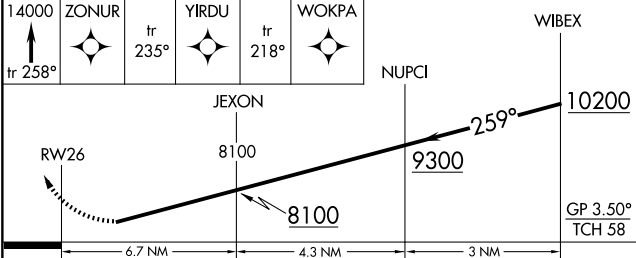
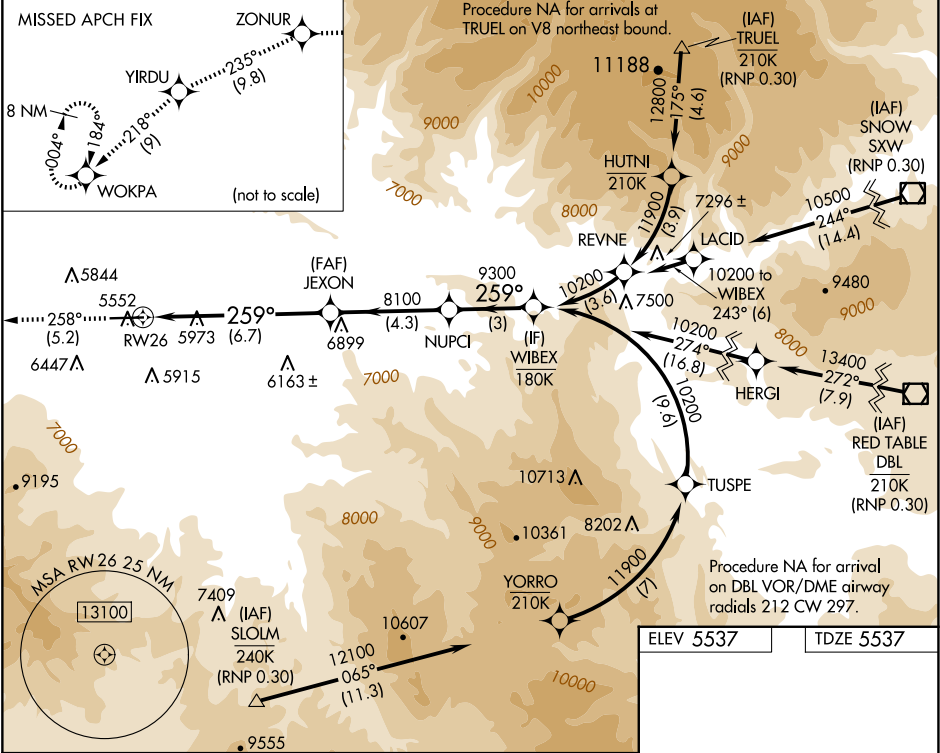
For uncompensated Baro-VNAV systems, procedure NA below -21°C or above 35°C. Inop table does not apply.

-13°C When VGSI inop, procedure NA at night.

ODALS

MISSED APPROACH: Climb to 14000 on track 258° to ZONUR and on track 235° to YIRDU and on track 218° to WOKPA and hold, continue climb-in-hold to 14000.

ASOS 135,275	DENVER CENTER 134.95 327.075	UNICOM 122.8 (CTAF)
-----------------	---------------------------------	------------------------



CATEGORY	A	B	C	D
RNP 0.30 DA	6395-2½	858 (900-2½)		

AUTHORIZATION REQUIRED

ELEV 5537 TDZE 5537

Diagram showing the runway (RWY 26) and taxiway (TAXI 26) layout. The runway is 7000 X 100 feet. The taxiway is 1.0% UP. The diagram also shows the location of the runway lights and the taxiway lights.

HIRL Rwy 8-26   
REIL Rwys 8