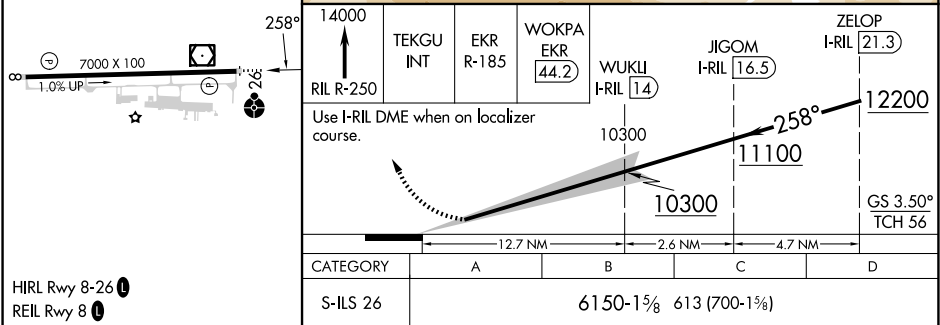
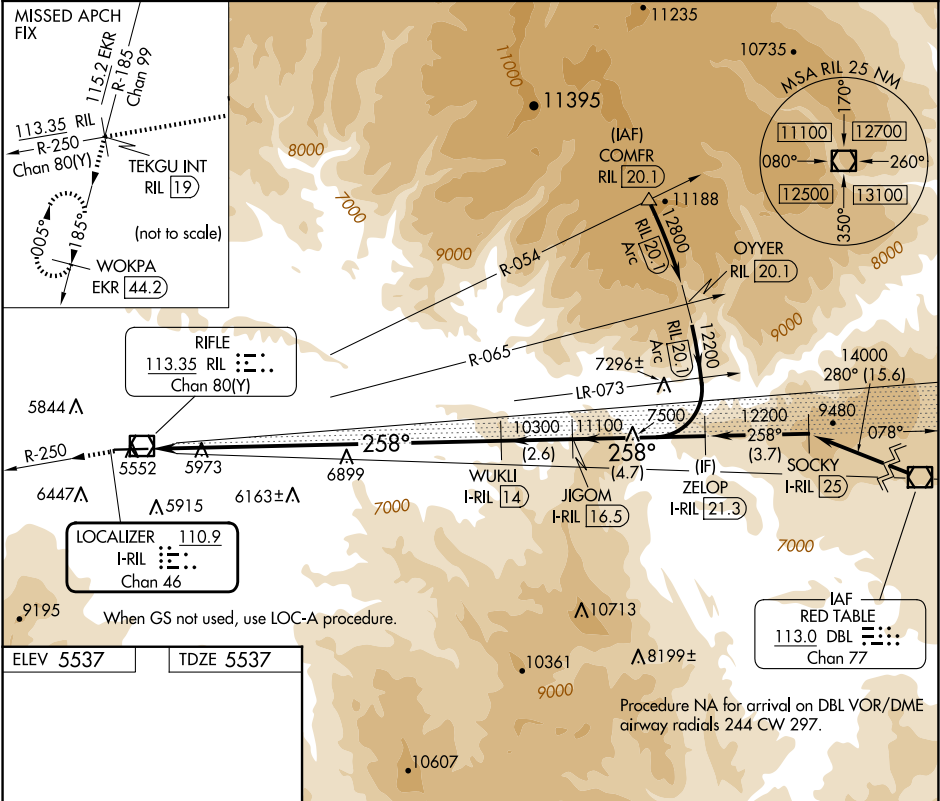


LOC/DME I-RIL <b>110.9</b> Chan <b>46</b>	APP CRS <b>258°</b>	Rwy Ldg TDZE Apt Elev	<b>7000</b> <b>5537</b> <b>5537</b>
---	------------------------	-----------------------------	---

ILS RWY 26  
RIFLE GARFIELD COUNTY (RIL)

DME required. ▽ ▲ ❄ -13°C	ODALS ❄	MISSED APPROACH: Climb to 14000 on RIL VOR/DME R-250 to TEKGU INT/RIL 19 DME and on EKR VOR/DME R-185 to WOKPA/EKR 44.2 DME and hold. Missed approach requires minimum climb of 420 feet per NM to 9600; if unable to meet climb gradient, see LOC-A.
------------------------------------	------------	---

ASOS <b>135.275</b>	DENVER CENTER <b>134.95 327.075</b>	UNICOM <b>122.8 (CTAF) 0</b>
------------------------	--	---------------------------------



SW-1, 07 AUG 2025 to 04 SEP 2025

SW-1, 07 AUG 2025 to 04 SEP 2025