

SPRINGFIELD, TENNESSEE

AL-6740 (FAA)

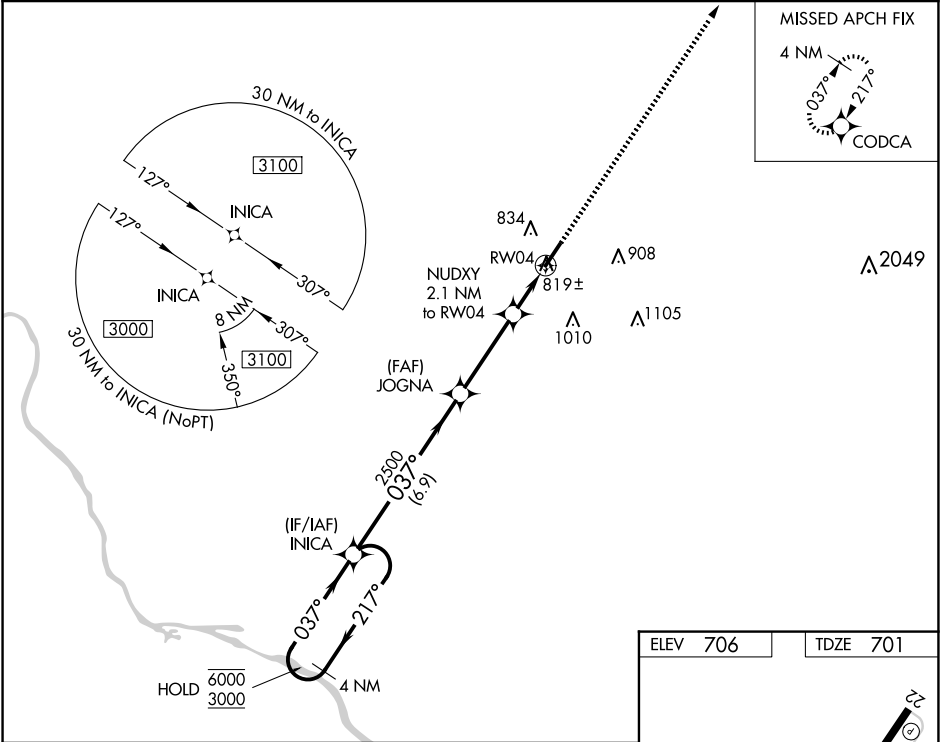
23110


WAAS CH 86626 W04A	APP CRS 037°	Rwy Idg TDZE Apt Elev	5505 701 706
--	------------------------	-----------------------------	---

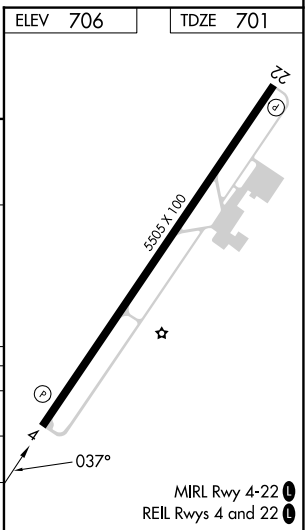
RNAV (GPS) RWY 4
SPRINGFIELD ROBERTSON COUNTY (M91)

RNP APCH - GPS.		MISSED APPROACH: Climb to 3000 direct CODCA and hold.
Rwy 4 helicopter visibility reduction below ¾ SM NA.		

AWOS-3 120.675	NASHVILLE APP CON 119.35 372.0	UNICOM 123.0 (CTAF) 0
--------------------------	--	---------------------------------



4 NM Holding Pattern				INICA		JOGNA		NUDXY 2.1 NM to RW04		1.1 NM to RW04		RW04		3000 ↑		CODCA 	
6000		← 217°		037° →		037°		3.00° TCH 40		2500		1400					
3000																	
				6.9 NM				3.4 NM				1 NM		1.1 NM			
CATEGORY		A		B		C		D									
LP MDA		1100-1		399 (400-1)		1100-1½		399 (400-1½)									
LNAV MDA		1100-1		399 (400-1)		1100-1½		399 (400-1½)									
CIRCLING		1140-1 434 (500-1)		1160-1 454 (500-1)		1360-1¾ 654 (700-1¾)		1540-2¾ 834 (900-2¾)									



SPRINGFIELD, TENNESSEE
Amdt 1D 19MAY22

36°32'N-86°55'W

RNAV (GPS) RWY 4
(M91)

SE-1, 07 AUG 2025 to 04 SEP 2025

SE-1, 07 AUG 2025 to 04 SEP 2025