

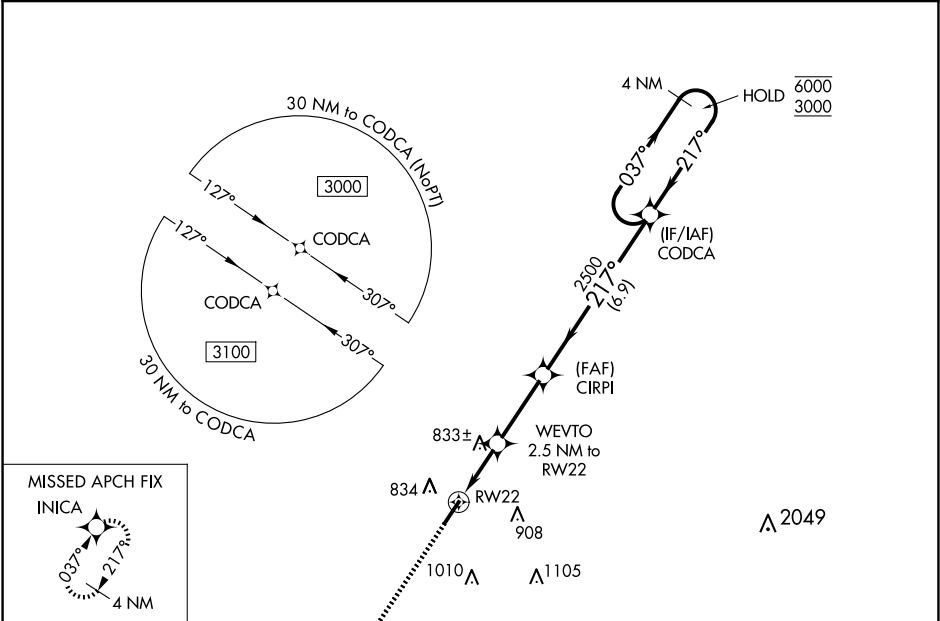
WAAS CH 42926 W22A	APP CRS 217°	Rwy Idg TDZE Apt Elev	5505 706 706
--	------------------------	-----------------------------	---

RNAV (GPS) RWY 22

SPRINGFIELD ROBERTSON COUNTY (M91)

RNP APCH - GPS.		MISSED APPROACH: Climb to 3000 direct INICA and hold.
T	Rwy 22 helicopter visibility reduction below ¾ SM NA. For uncompensated Baro-VNAV systems,	
A	NA LNAV/VNAV NA below -16°C or above 39°C.	

AWOS-3 120.675	NASHVILLE APP CON 119.35 372.0	UNICOM 123.0 (CTAF) 0
--------------------------	--	---------------------------------



ELEV 706	TDZE 706
----------	----------

