

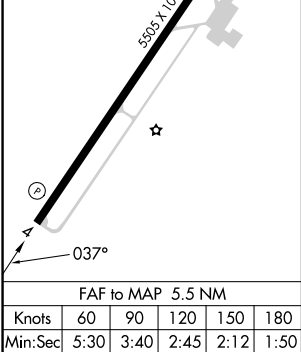
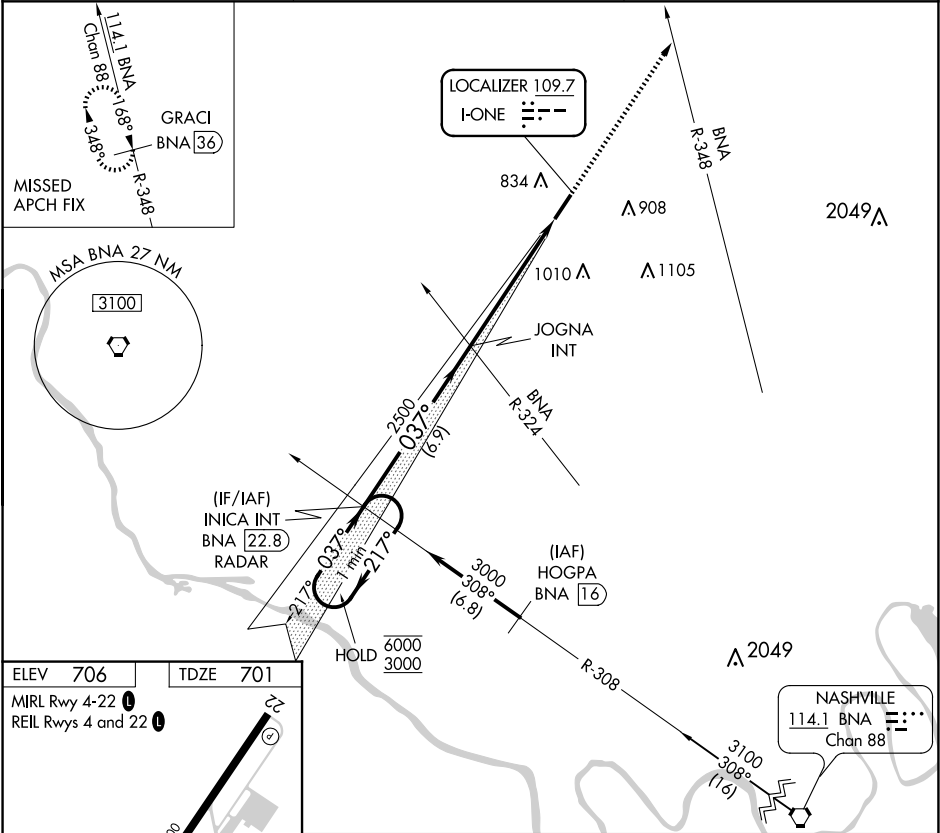
LOC I-ONE	APP CRS	Rwy Idg
109.7	037°	5505
		TDZE 701
		Apt Elev 706

LOC RWY 4

SPRINGFIELD ROBERTSON COUNTY (M91)

NA	Rwy 4 helicopter visibility reduction below 3/4 SM NA.	MISSED APPROACH: Climb to 3100 on heading 037° and BNA VORTAC R-348, to GRACI/BNA 36 DME and hold.
----	--	--

AWOS-3 120.675	NASHVILLE APP CON 119.35 372.0	UNICOM 123.0 (CTAF) 0
-------------------	-----------------------------------	--------------------------



<div>INICA INT BNA 22.8 RADAR</div> <div><div>6000 3000</div><div>←217° 037°→</div><div>037°</div></div>		<div>3100</div> <div>↑</div> <div>hdg 037°</div>	<div>BNA R-348</div>	<div>GRACI BNA 36</div>
<div>2500</div> <div>3.00° TCH 40</div> <div>6.9 NM</div> <div>5.5 NM</div>		<div>JOGNA INT</div> <div>✱</div>		
CATEGORY	A	B	C	D
S-4	1180-1 479 (500-1)		1180-1 3/8 479 (500-1 3/8)	
<div>CIRCLING</div>	1180-1 474 (500-1)		1360-1 3/4 654 (700-1 3/4)	1540-2 3/4 834 (900-2 3/4)

SE-1, 07 AUG 2025 to 04 SEP 2025

SE-1, 07 AUG 2025 to 04 SEP 2025