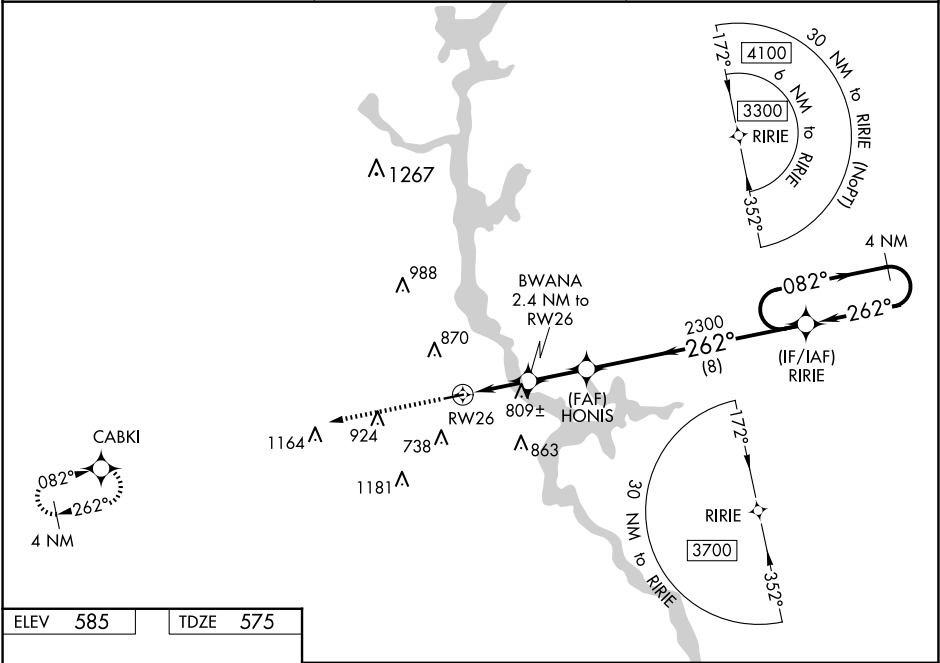


WAAS CH 48839 W26A	APP CRS 262°	Rwy Idg TDZE Apt Elev	4007 575 585
--	------------------------	-----------------------------	---

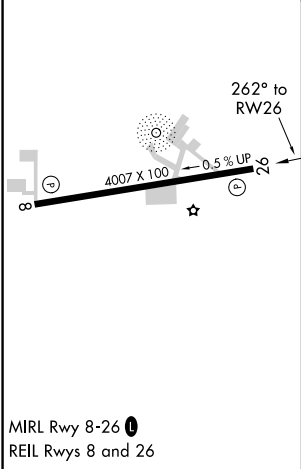
RNAV (GPS) RWY 26
CHILTON COUNTY (Ø2A)



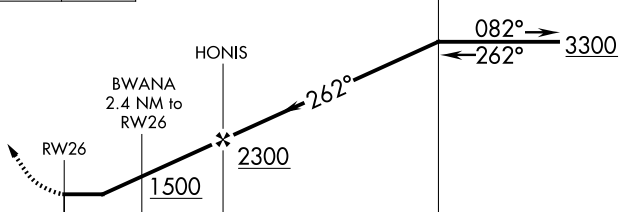

NA	DME/DME RNP-0.3 NA. Procedure NA at night. Use Shelby County altimeter setting; when not received, use Merkel Field Sylacauga Muni altimeter setting and increase all MDA 20 feet and LP visibility Cat C/D ½ mile. Helicopter visibility reduction below 1 SM NA.	MISSED APPROACH: Climb to 3000 direct CABKI and hold.
----	--	---

EET ASOS-3 134.325	MONTGOMERY APP CON ★ 121.2 269.05	UNICOM 122.8 (CTAF) Ø
------------------------------	---	---------------------------------



ELEV 585	TDZE 575
-----------------	-----------------



3000	CABKI	Visual Segment - Obstacles.		4 NM Holding Pattern		
						
CATEGORY		A		B	C	D
LP	MDA	1100-1		525 (600-1)	1100-1½	525 (600-1½)
LNAV	MDA	1120-1		545 (600-1)	1120-1⅝	545 (600-1⅝)
 CIRCLING		1260-1		675 (800-1)	1280-2 695 (700-2)	1600-3 1015 (1100-3)

SE-4, 07 AUG 2025 to 04 SEP 2025

SE-4, 07 AUG 2025 to 04 SEP 2025