

WAAS CH <b>81908</b> <b>W15A</b>	APP CRS <b>137°</b>	Rwy Idg <b>4797</b> TDZE <b>3423</b> Apt Elev <b>3425</b>
--	------------------------	---

RNAV (GPS) RWY 15

GRANT MUNI (GGT')

RNP APCH - GPS.

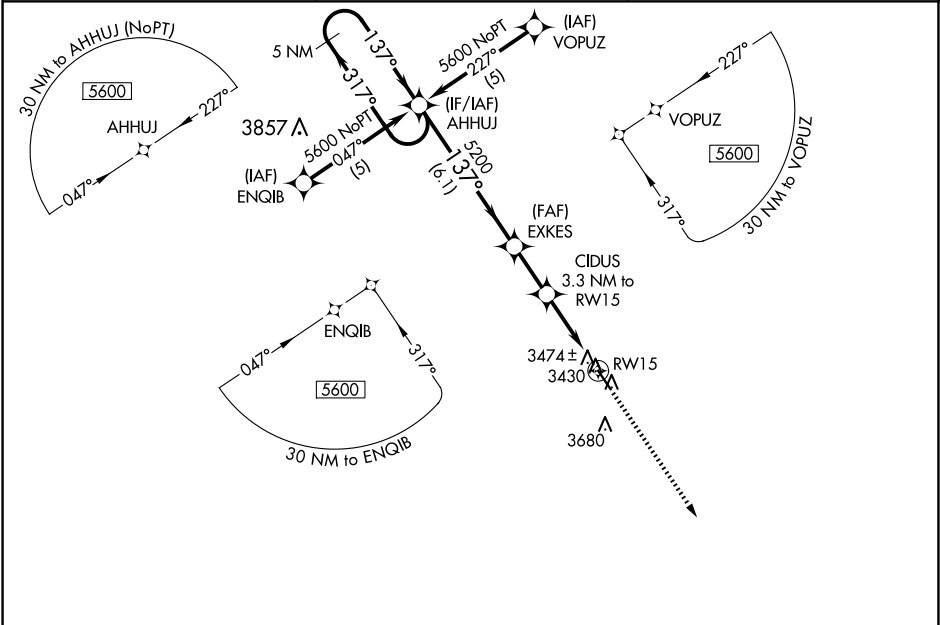
▼

▲

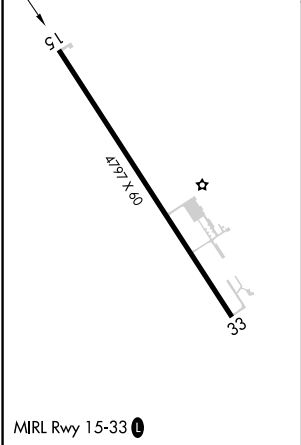
For uncompensated Baro-VNAV systems, LNAV/VNAV NA below -21°C or above 54°C. When local altimeter setting not received, use Ogallala altimeter setting and increase LPV DA to 3728 feet; increase LNAV/VNAV DA to 3888 feet and all visibilities ¼ SM; increase all MDAs 60 feet. VDP and Baro-VNAV NA when using Ogallala altimeter setting.

MISSED APPROACH:  
Climb to 5600 direct  
AYXOS and hold.

AWOS-3PT <b>118.025</b>	DENVER CENTER <b>132.7 397.85</b>	UNICOM <b>122.8 (CTAF) 0</b>
----------------------------	--------------------------------------	---------------------------------



ELEV <b>3425</b>	TDZE <b>3423</b>
------------------	------------------



5 NM Holding Pattern		AHUJ	EXKES	CIDUS 3.3 NM to RW15	AYXOS
5600 ← 317°		137° →	137°	5200	*4520
GP 3.00°		TCH 40	6.1 NM	2.1 NM	2.4 NM
*0.9 NM to RW15					0.9 NM
CATEGORY	A	B	C	D	
LPV DA	3673-1	250 (300-1)	NA		
LNAV/VNAV DA	3833-1½	410 (500-1½)	NA		
LNAV MDA	3740-1	317 (400-1)	NA		
CIRCLING	3900-1 475 (500-1)	3980-1 555 (600-1)	NA		