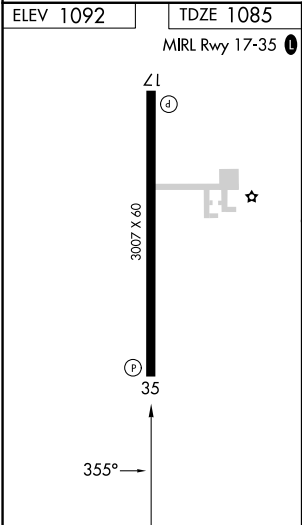
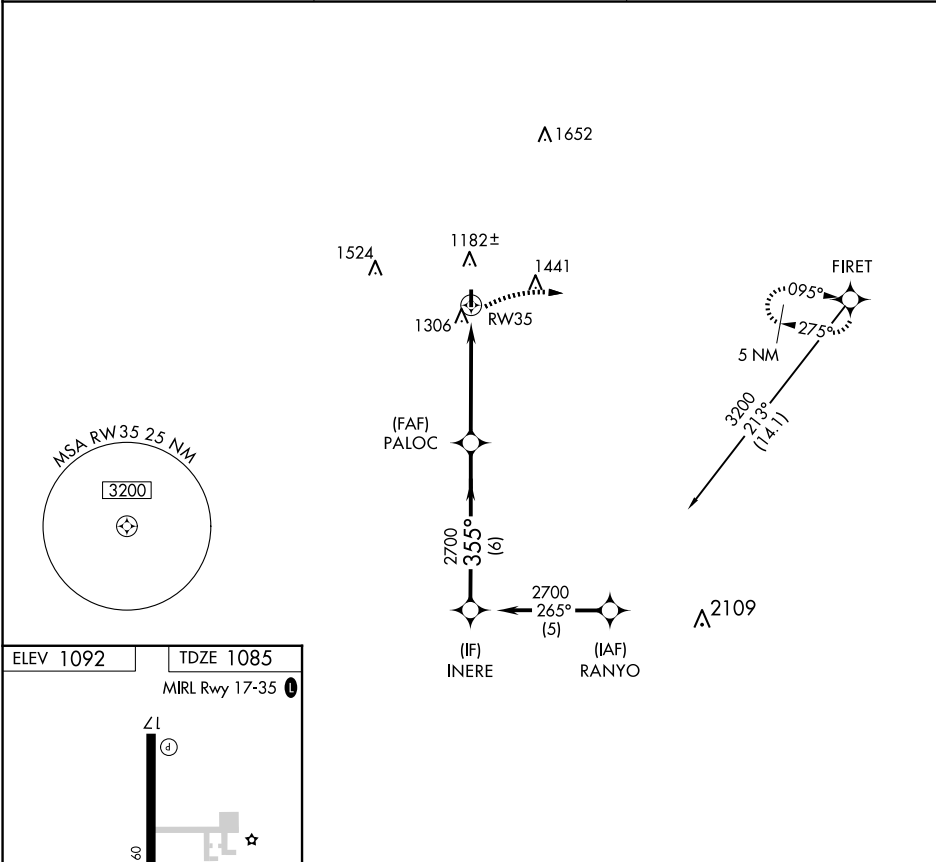


APP CRS	Rwy Idg	3007
355°	TDZE	1085
	Apt Elev	1092

RNAV (GPS) RWY 35
MEDFORD MUNI (O53)

RNP APCH.	MISSED APPROACH: Climbing right turn to 5000 direct FIRET and hold.
▲ NA Use Ponca City Rgnl altimeter setting. Procedure NA at night.	

PNC ASOS 134.075	VANCE APP CON★ 118.075 273.475	UNICOM 122.8 (CTAF) 0
---------------------	-----------------------------------	--------------------------



5000	FIRET	PALOC	INERE	Procedure Turn NA
RW35		2700	2700	
355°		3.00°	VGSi and descent angles not coincident (VGSi Angle 3.51/TCH 33).	
4.9 NM		6 NM		
CATEGORY	A	B	C	D
LNAV MDA	1700-1¼	608 (700-1¼)	NA	
CIRCLING	1740-1¼ 648 (700-1¼)	1840-1¼ 748 (800-1¼)	NA	

SC-1, 07 AUG 2025 to 04 SEP 2025

SC-1, 07 AUG 2025 to 04 SEP 2025