

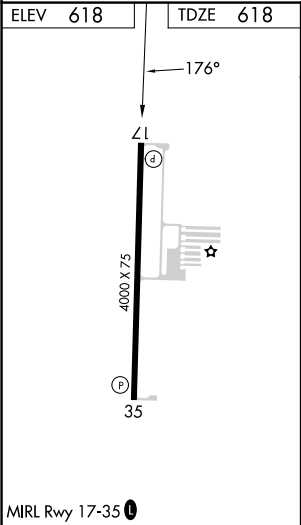
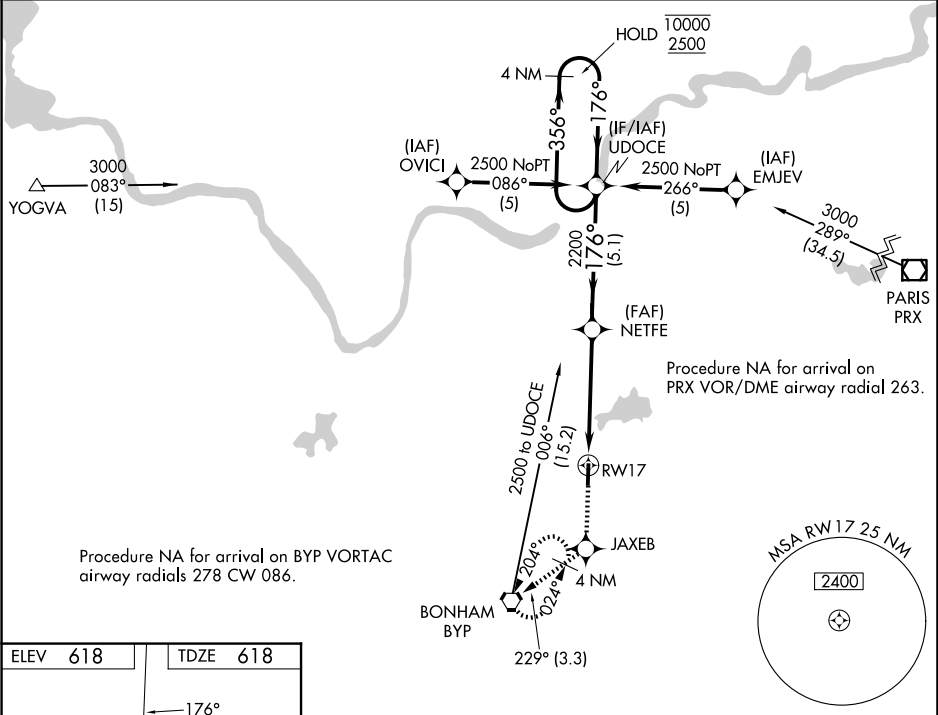
WAAS CH <b>99523</b> <b>W17A</b>	APP CRS <b>176°</b>	Rwy Ldg TDZE Apt Elev <b>618</b>	<b>4000</b> <b>618</b> <b>618</b>
--	------------------------	--	---

RNAV (GPS) RWY 17

JONES FLD (F00)

RNP APCH - GPS.	MISSED APPROACH: Climb to 2500 direct JAXEB and on track 229° to BYP VORTAC and hold.
▼ Rwy 17 helicopter visibility reduction below 1 SM NA. Baro-VNAV NA. ▲ When local altimeter setting not received, use Durant altimeter setting.	

AWOS-3 PT <b>118.05</b>	FORT WORTH CENTER <b>124.875 370.95</b>	UNICOM <b>122.8(CTAF) 0</b>
----------------------------	--	--------------------------------



2500	JAXEB	tr 229°	BYP	UDOC	4 NM Holding Pattern
					GP 3.00° TCH 35
CATEGORY	A	B	C	D	
LPV DA	906-1	288 (300-1)	NA	NA	
LNAV/VNAV DA	1030-1½	412 (500-1½)	NA	NA	
LNAV MDA	1180-1	562 (600-1)	NA	NA	
CIRCLING	1240-1 622 (700-1)	1400-1 782 (800-1)	NA	NA	

SC-2, 07 AUG 2025 to 04 SEP 2025

SC-2, 07 AUG 2025 to 04 SEP 2025