

WAAS CH <b>58308</b> <b>W18A</b>	APP CRS <b>176°</b>	Rwy ldg <b>5200</b> TDZE <b>826</b> Apt Elev <b>831</b>
--	------------------------	---

RNAV (GPS) RWY 18

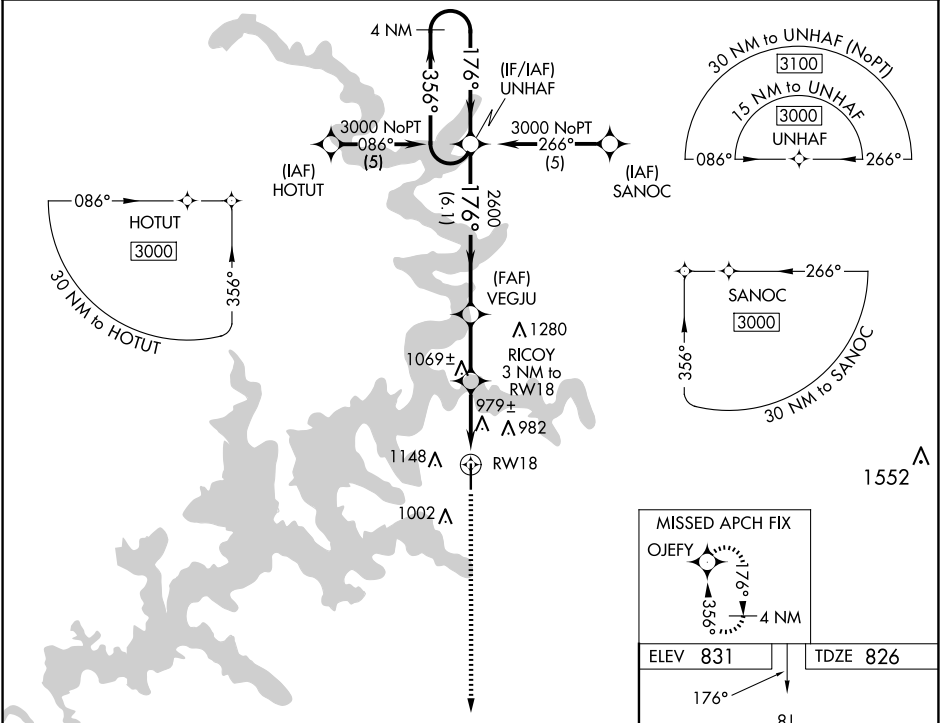
GROVE RGNL (G.M.J)

▼

For uncompensated Baro-VNAV systems, LNAV/VNAV NA below -16°C (4°F) or above 54°C (130°F). DME/DME RNP-0.3 NA. Visibility reduction by helicopters NA.

MISSED APPROACH: Climb to 3000 direct OJEFY and hold.

AWOS-3PT <b>119.025</b>	KANSAS CITY CENTER <b>128.6 282.325</b>	UNICOM <b>122.8</b> (CTAF)
----------------------------	--	-------------------------------



VGSI and RNAV glidepath not coincident (VGSI Angle 2.75\TCH 31).				
4 NM Holding Pattern UNHAF		3000 OJEFY		
3000 ← 356° → 176° →		*LNAV only.		
GP 3.00° TCH 40		VEGJU RICOY 3 NM to RW18 RW18		
		2600 *1820		
		6.1 NM 2.4 NM 3 NM		
CATEGORY	A	B	C	D
LPV DA	1153-1¼		327 (400-1¼)	NA
LNAV/VNAV DA	1346-2		520 (600-2)	NA
LNAV MDA	1240-1	414 (500-1)	1240-1¼ 414 (500-1¼)	NA
CIRCLING	1500-1	669 (700-1)	1500-1¼ 669 (700-1¼)	NA

