

VOR/DME SHB
116.15
Chan **108** (Y)

APP CRS
142°

Rwy Idg
TDZE
Apt Elev

N/A
N/A
909

VOR-A

GREENSBURG MUNI (I34)

ADF or RADAR or DME required.

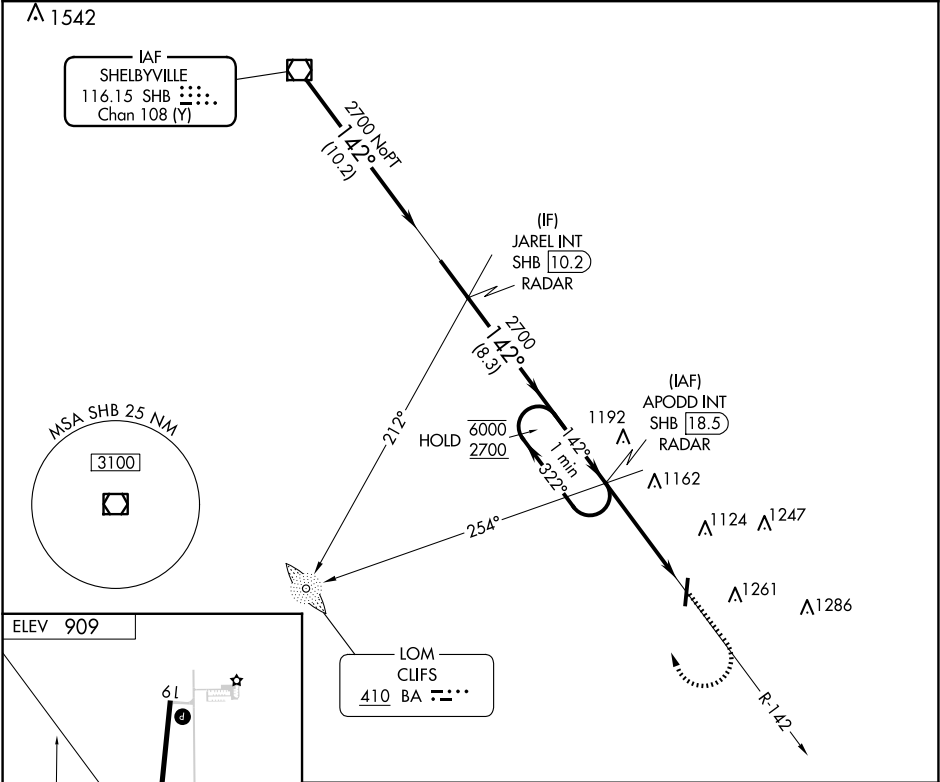
▼

▲ NA

Use Columbus Muni altimeter setting, when not received, use Indianapolis Intl altimeter setting and increase all MDAs 40 feet and visibility Cat C ¼ SM.

MISSED APPROACH: Climb to 2000 then climbing right turn to 2700 on SHB R-142 to APODD INT/SHB 18.5 DME/RADAR and hold.

BAK AWOS-3 119.75	INDIANAPOLIS APP CON 127.15	CTAF 122.9 0
-----------------------------	---------------------------------------	------------------------



One Minute Holding Pattern

APODD INT
SHB 18.5
RADAR

2000
2700

SHB R-142

APODD INT

6000
2700

322°
142°

142°

SHB 23

4.5 NM

CATEGORY	A	B	C	D
CIRCLING	1540-1 631 (700-1)	1640-1 731 (800-1)	1640-2 731 (800-2)	NA

EC-2, 07 AUG 2025 to 04 SEP 2025

EC-2, 07 AUG 2025 to 04 SEP 2025