

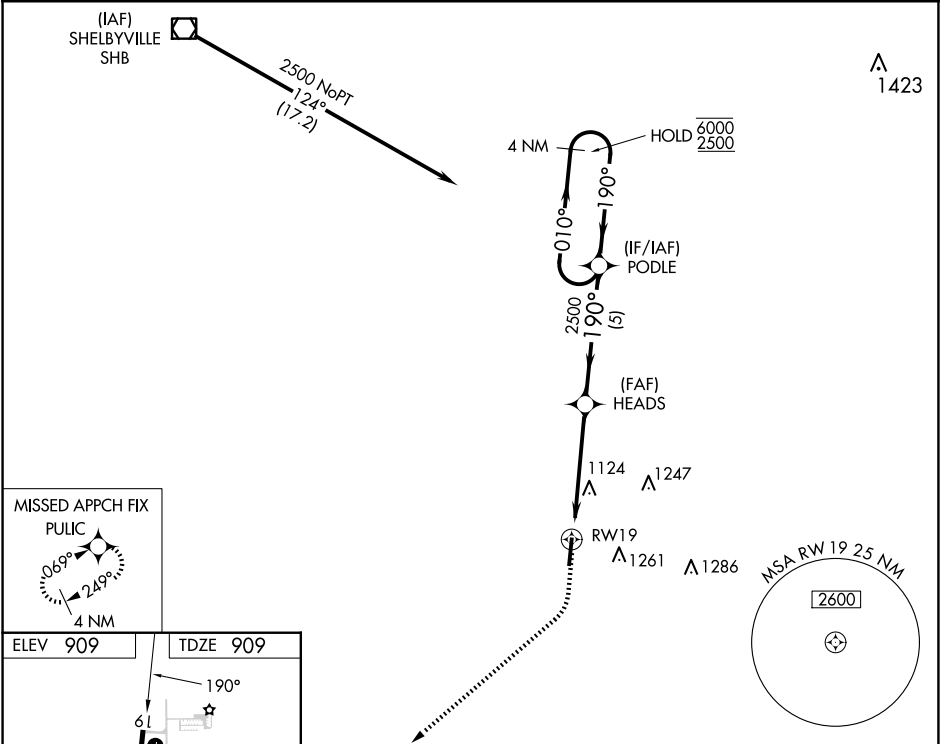
WAAS CH 69245 W19A	APP CRS 190°	Rwy Idg 5406 TDZE 909 Apt Elev 909
--	------------------------	---

RNAV (GPS) RWY 19

GREENSBURG MUNI (I34)

RNP APCH - GPS.	MISSED APPROACH: Climb to 1500 then climbing right turn to 2500 direct PULIC and hold.
Baro-VNAV NA. Use Columbus Muni altimeter setting, when not received, use Indianapolis Intl altimeter setting: increase LPV DA to 1327 feet and all visibilities $\frac{1}{8}$ SM; increase LNAV/VNAV DA to 1419 feet; increase all MDAs 40 feet and Circling visibility Cat C $\frac{1}{4}$ SM.	

BAK AWOS-3 119.75	INDIANAPOLIS APP CON 127.15	CTAF 122.9 0
-----------------------------	---------------------------------------	------------------------



1500	2500	PULIC	HEADS 2500	PODLE	4 NM Holding Pattern
↑	↶	✧	✖	↑	010° → 6000 ← 190° 2500
RW19		2500		GP 3.00° TCH 40	
4.9 NM		5 NM			
CATEGORY	A	B	C	D	
LPV DA	1288-1	379 (400-1)		NA	
LNAV/VNAV DA	1380-1 $\frac{3}{8}$	471 (500-1 $\frac{3}{8}$)		NA	
LNAV MDA	1500-1	591 (600-1)	1500-1 $\frac{3}{4}$ 591 (600-1 $\frac{3}{4}$)	NA	
CIRCLING	1540-1 631 (700-1)	1640-1 731 (800-1)	1640-2 731 (800-2)	NA	

MIRL Rwy 1-19 0
REIL Rws 1 and 19 0