

APP CRS
346°

Rwy Idg
TDZE
Apt Elev

3399
702
702

RNAV (GPS) RWY 35
DEVINE MUNI (23R)

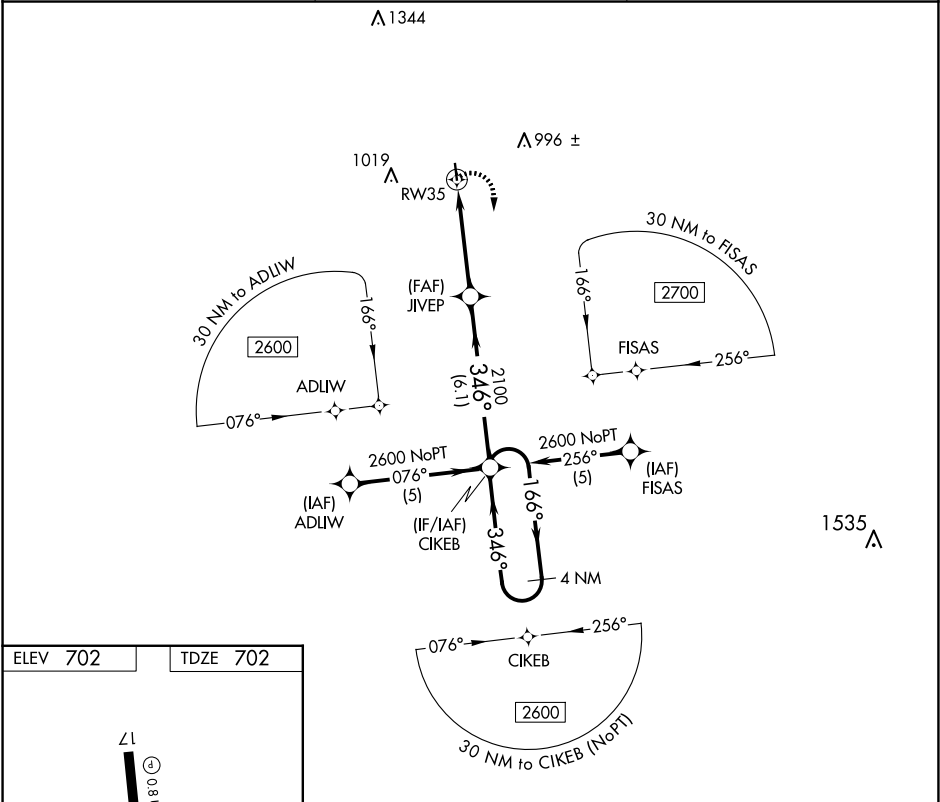
▼

NA

DME/DME RNP-0.3 NA. Use Castroville Muni altimeter setting; when not received, use Hondo Muni altimeter setting and increase all MDA 40 feet. Night landing: Rwy 35 NA. Helicopter visibility below 1 SM NA.

MISSED APPROACH: Climbing right turn to 2600 direct CIKEB and hold.

CVB AWOS-3 119.25	HOUSTON CENTER 134.95 269.4	CTAF 122.9 0
----------------------	--------------------------------	-----------------



ELEV 702

TDZE 702

3399 X 60

35

MIRL Rwy 17-35 0

346° to RW35

2600

CIKEB

Visual Segment - Obstacles.

CIKEB

4 NM Holding Pattern

166°

2600

346°

2100

JIVEP

RW35

4.2 NM

6.1 NM

CATEGORY	A	B	C	D
LNAV MDA	1140-1	438 (500-1)	NA	
CIRCLING	1380-1	678 (700-1)	NA	