

APP CRS  
**074°**

Rwy Idg  
TDZE  
Apt Elev

**N/A**  
**N/A**  
**480**

**RNAV (GPS)-A**  
ALEXANDRIA (N85)

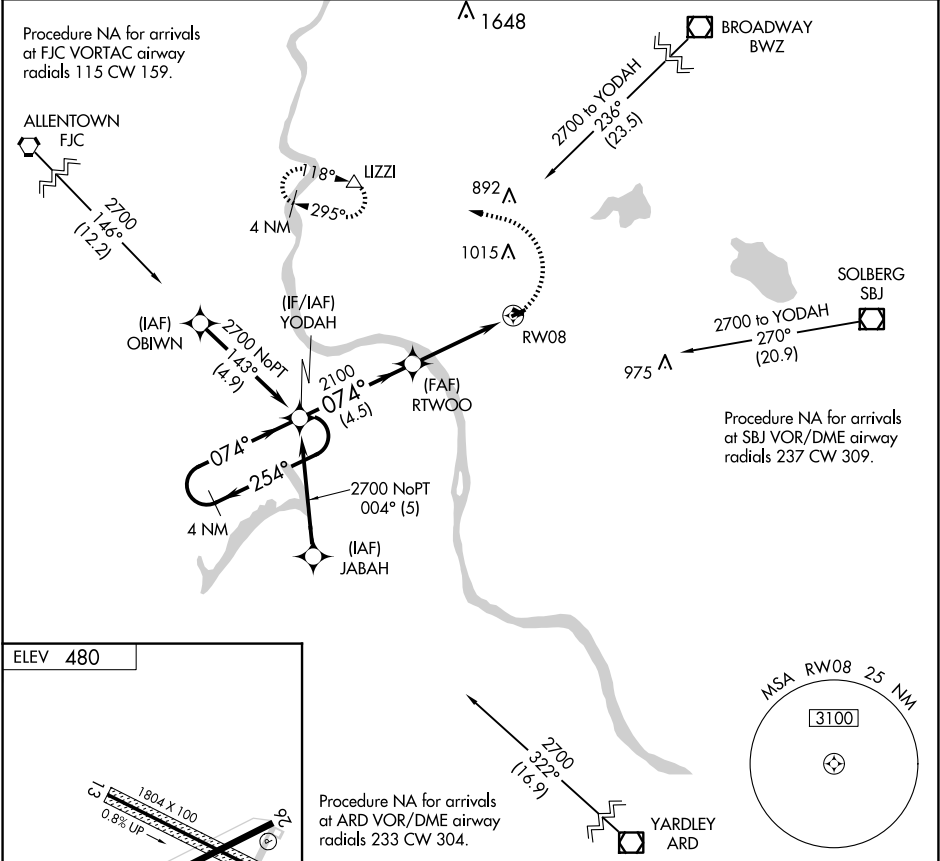
▼

NA

DME/DME RNP-0.3 NA. Use Lehigh Valley Intl, Allentown, PA altimeter setting. Procedure NA at night. Helicopter visibility reduction below 1 SM NA.

MISSED APPROACH: Climbing left turn to 3000 direct LIZZI and hold, continue climb-in-hold to 3000.

ALLENTOWN APP CON <b>119.65 124.45 351.8</b>	UNICOM <b>122.975 (CTAF)</b>	<b>121.8 0</b>
---	---------------------------------	----------------



4 NM Holding Pattern YODAH

VGSI and descent angles not coincident (VGSI Angle 4.00/TCH 30).

3000

LIZZI

2700 ← 254°

074° →

074°

RTWOO

2100

3.77° TCH 35

RW08

4.5 NM

4 NM

CATEGORY	A	B	C	D
CIRCLING	1240-1 760 (800-1)	NA		

MRL Rwy 8-26